

# eco-cycle® Zero Waste Holiday Guide

Your guide to a less wasteful and more meaningful holiday season

## ZERO WASTE GIFT WRAPPING

Wrapping paper is not recyclable—it is more clay and ash than it is paper fiber, so please avoid it when possible. Use these “Best” and “Good” choices that are still festive yet far more sustainable.

### Best

**REUSE** THESE MATERIALS YEAR AFTER YEAR AND SAVE RESOURCES AND MONEY!



**Fabric**



**Reusable bags and boxes**

(also recyclable; remove handles and non-paper materials before recycling)



**Drawstring pouches and pillowcases**

### Good

**RECYCLE** THESE ITEMS IF THEY CANNOT BE REUSED. RECYCLING SAVES RESOURCES TOO.

**Kraft wrapping paper and brown paper bags**  
(plain brown wrapping paper with no foil or glitter)



**Recyclable papers**  
(for example: newspaper, magazine pages, posters, calendar pages, maps, blueprints, sheet music, etc.)

### Avoid

**TRASH** THESE ITEMS IF THEY CANNOT BE REUSED. PLEASE AVOID WHEN POSSIBLE.

**Wrapping paper**  
(non-kraft paper)



**Mylar wrap**



**Ribbons, bows, and gift tissue paper**



**Gift bags containing foil, Mylar, or glitter**  
(keep for reuse; throw away when ripped)

**More Holiday Tips:** Reduce holiday waste by following the tips below!

### Zero Waste Gatherings

Instead of disposable tableware, **including certified compostable products (which are no longer accepted in curbside compost bins)**, serve food on reusable dishware. Borrow from friends or go thrifting for a special holiday set! Decorate the table with greenery, gourds, or other seasonal veggies and fruits.



### Prevent Food Waste

In the US, up to 40% of food is thrown out, wasting all the water and energy used to grow and transport that food. You can significantly reduce your household's food waste by planning your meals, buying the right quantity, and storing produce properly to keep it fresh!



Get more holiday tips at  
[ecocycle.org/zero-waste-holiday](https://ecocycle.org/zero-waste-holiday)

# Recycle Your Holiday Leftovers!



## Wrapping Paper

Please avoid using traditional gift wrapping paper as it is a very low-grade material and considered a contaminant in the recycling bin. Instead, use wrapping paper alternatives that are reusable or recyclable.

For a limited time (Dec 26–Jan 31) RECYCLE AT THESE LOCATIONS:

- **Boulder County Recycling Center Drop-Off Center** in Single-Stream Recycling bin
- **Longmont Waste Diversion Center** in Single-Stream Recycling bin

**NO** metallic wrapping paper, ribbons, bows, ornaments, tissue paper, dark or fluorescent paper, or tape.



## Food Scraps

COMPOST in curbside bins and at these drop-off centers:

- **Eco-Cycle CHaRM**; facility fee applies
- **Longmont Waste Diversion Center**
- **Nederland Transfer Station & Recycling Drop-Off Center**

## Cooking Oil

RECYCLE AT THESE LOCATIONS ONLY, NOT in curbside bins:

- **Eco-Cycle CHaRM**; facility fee applies
- **Longmont Waste Diversion Center**



## Batteries

RECYCLE AT THESE LOCATIONS ONLY, NOT in curbside bins:

**Rechargeable Batteries:**

- **Boulder County Hazardous Materials Management Facility**
- **Longmont Waste Diversion Center**

**Alkaline Batteries:**

- **Boulder County Hazardous Materials Management Facility**



## Holiday Cards

REUSE cards as next year's gift tags or place-setting cards. RECYCLE in curbside bins and at drop-off centers. **NO cards embossed with foil or other non-paper material. NO ribbons, photos, or photo paper.**

## Dark Envelopes

**TRASH**; NOT RECYCLABLE  
Dark-colored envelopes such as reds and greens are not recyclable or compostable curbside or at drop-off centers.

## White and Light-Colored Paper Envelopes

Recyclable in your single-stream curbside bin.



## Paper Shopping Bags & Cardboard Boxes

RECYCLE curbside or at drop-off centers. Large staples & shiny graphics OK. **REMOVE non-paper handles (synthetic string, etc.) and metal grommets.**

## Packing Peanuts

REUSE ONLY, NOT RECYCLABLE  
Take to packing & shipping stores; find locations at [ecocycle.org/a-z-guide](http://ecocycle.org/a-z-guide).

## Bubble Wrap

RECYCLE AT **Eco-Cycle CHaRM, Longmont Waste Diversion Center**, and participating plastic film recycling collections, NOT in curbside bins.

## Tissue Paper

No longer compostable in curbside bins. Reuse if possible, or put in trash.



## Electronics & Appliances

RECYCLE AT THESE LOCATIONS:

- **Eco-Cycle CHaRM**; facility fee applies
- an e-Steward certified recycler—find one at [e-stewards.org/find-a-recycler](http://e-stewards.org/find-a-recycler)

**Disposing of electronics in the trash is illegal in Colorado.**



## Holiday String Lights & Extension Cords

RECYCLE AT THESE LOCATIONS ONLY, NOT in curbside bins:

- **Eco-Cycle CHaRM**; facility fee applies
- **Nederland Transfer Station and Recycling Center**
- **Longmont Waste Diversion Center**
- **Allenspark Drop-Off Center**

Attached light bulbs are OK.

**Please bundle cords & tie with the loose end so they don't get caught in machinery.**

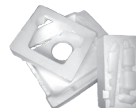


## Plastic Bags

Includes grocery bags, dry-cleaner bags, and zip-top baggies (no zip pouches from prepackaged foods). RECYCLE AT THESE LOCATIONS ONLY, NOT in curbside bins:

- **Eco-Cycle CHaRM**; facility fee applies
- **Longmont Waste Diversion Center**
- Find other locations at [ecocycle.org/a-z-guide](http://ecocycle.org/a-z-guide)

**Bags must be clean, dry, and empty. NO tape. Plastic bags are NOT recyclable in curbside bins.** For details, visit [ecocycle.org/charm-guidelines](http://ecocycle.org/charm-guidelines).



## #6 White Block Foam

(aka Styrofoam®)

RECYCLE AT THESE LOCATIONS ONLY, NOT in curbside bins:

- **Eco-Cycle CHaRM**; facility fee applies
- **Longmont Waste Diversion Center**

This is the material typically used to package computers, TVs, large appliances, etc.

**NO food-grade foam (to-go containers, meat trays, egg cartons, disposable cups, etc.), tape, packing peanuts (see listing), bubble wrap (see listing), bendable foam, any foam other than #6, or any color other than white.**

## Drop-Off Centers in Boulder County

### Boulder County Recycling Center

1901 63rd St., Boulder; open 24 hours

### Boulder County Hazardous Materials Management Facility (HMMF)

1901 63rd St., Boulder. Located behind (west) of the Boulder County Recycling Center.

Open Wed–Sat, 8:30 am–4 pm; Tues. for business waste by appointment only; closed Sun–Mon.

[bouldercounty.gov/environment/hazardous-waste/management-facility](http://bouldercounty.gov/environment/hazardous-waste/management-facility)

### Eco-Cycle/City of Boulder Center for Hard-to-Recycle Materials (CHaRM)

6400 Arapahoe Rd., Boulder

Open Mon–Sat, 9 am–5 pm; closed Sundays

Fees apply for some materials. To learn more, visit [ecocycle.org/charm](http://ecocycle.org/charm)

### Longmont Waste Diversion Center

140 Martin St., Longmont

Longmont residents only. Bring ID + recent utility bill as proof of being a City of Longmont trash subscription customer.

Staffed hours: Mon–Sat, 8 am–4 pm

Single-stream recycling drop-off open 24/7.

[longmontcolorado.gov/departments/departments-n-z/trash-and-recycling/waste-diversion-center](http://longmontcolorado.gov/departments/departments-n-z/trash-and-recycling/waste-diversion-center)

### Nederland Transfer Station & Recycling Drop-Off Ctr.

286 Ridge Road, Nederland

Hours: Open daily (except Wed.) 8 am–4 pm

[bouldercounty.gov/environment/trash/nederland-transfer-and-recycle](http://bouldercounty.gov/environment/trash/nederland-transfer-and-recycle)

### Allenspark Transfer Station & Recycling Drop-Off Ctr.

County Rd 84 & State Hwy 7

Open Sun, Mon, Wed, Fri, Sat; 10 am–4 pm

[bouldercounty.gov/environment/trash/allenspark-transfer-and-recycle](http://bouldercounty.gov/environment/trash/allenspark-transfer-and-recycle)

### Lyons Drop-Off Recycling Center

198 2nd Ave, on the south side of the lot.

Open daily, 7 am–7 pm

[townoflyons.com/369/Sustainability-Resources-Waste](http://townoflyons.com/369/Sustainability-Resources-Waste)

## Tree Recycling Programs

**Remove all decor, tinsel, lights, stands, wire, etc.**

**Boulder County/City of Boulder:** Accepting trees from City of Boulder and Boulder County residents for free from 12/26/23–1/31/24 at Western Disposal, 2051 63rd St. Trees can be picked up curbside on your residential compost day until Jan 31 (if tree is longer than 6 ft, please cut the top off and place in the compost bin).

**Erie:** Accepting trees of less than a 12-inch diameter year-round (weather permitting). Open daily, 8 am–4 pm, 1000 Briggs St., Erie. ID required.

**Lafayette:** Republic Services will pick up Christmas trees for composting curbside during weekly residential service January–March. Trees must be cut to 4 ft. in length and bundled with rope or twine.

**Louisville:** Accepting trees 1/8–1/9/24, 8 am–4 pm at the Branch Recycling Site. Louisville ID required. Trees can also be collected on your residential curbside compost day if cut into pieces that fit in the cart with the lid closed.

**Longmont:** Accepting trees at the Waste Diversion Center year-round; Mon–Sat, 8 am–4 pm.

**Superior:** Accepting trees 12/26/23–1/31/24, 8 am–5 pm daily at 2125 Honey Creek Lane.