

Zero Waste

2022

Holiday Guide

eco-cycle®



WRAPPING PAPER IS NOT ACCEPTED IN CURBSIDE RECYCLING IN BOULDER COUNTY AND NO LONGER ACCEPTED IN CURBSIDE COMPOST. See page 2 for details on wrapping paper recycling at drop-off centers.

Zero Waste Gift Wrapping

Most wrapping paper has more clay content than paper fiber, making it difficult to recycle. Instead, choose to wrap gifts with reusable fabric, paper gift bags (reusable and recyclable), or recyclable comics, posters, maps, or calendars.

If you are shipping gifts, replace foam or bubble wrap with balled-up, recyclable paper.



Don't Give "Stuff"

Instead of buying new products for your loved ones, give the gift of an experience (such as a membership or tickets to an event), make a donation to a nonprofit in their name, or gift a subscription to an online course.

Something edible like a dessert or snack packaged in a reusable jar also makes a great gift! Finally, consider gifting products that will help reduce waste, such as reusable water bottles, mugs, straws, and to-go containers.



Make Holiday Gatherings Zero Waste

Instead of disposable tableware, serve food on reusable dishware. Borrow dish sets and glassware from friends or go thrift store shopping for a special holiday set! Decorate the table with foraged greenery, gourds and squash, bowls full of apples, or other seasonal fruits and veggies.

Prevent Food Waste

In the US, up to 40% of food is thrown out, wasting all the water and energy used to grow and transport that food. You can significantly reduce your household's food waste by planning your meals, buying the right quantity, and storing produce properly to keep it fresh!



Get tips on shopping, storing, and preparing food to reduce waste!



Use Up Food Scraps

Save bones, carrot peels, celery tops, and potato peels to boil and create your own vegetable stock. Add overripe fruits and veggies to smoothies, or bake fruit into cobblers and veggies into casseroles. Or, freeze fruits and veggies to preserve them for weeks (or months)!



Unused food scraps and other organic material can be composted. Find our Compost Guide here!



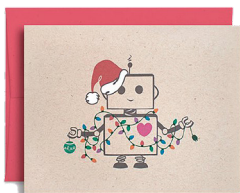
Find out the steps you can take to end junk mail for good!

Stop Junk Mail

The holidays can bring catalogs and other mail urging you to buy, buy, buy. But you can prevent it! As soon as you receive an unwanted publication, call the 1-800 number and ask to be removed from their list, or use the QR code to follow our steps to stop junk mail!

Send Cards That Are Recyclable and Contain Recycled Content

Plain paper cards are recyclable, and cards made with recycled content support recycling systems! Avoid cards printed on photo paper and cards embossed with foil, glitter, plastic, or ribbons—they cannot be recycled.



eco-cycle®
Building Zero Waste Communities



Learn more ways to practice Zero Waste at
home at ecocycle.org/eco-living

Recycle Your Holiday Leftovers!



Wrapping Paper

Please avoid using gift wrapping paper as it is a very low-grade material and considered a contaminant in the recycling bin because of its high clay and ink content and low fiber content. Instead, use wrapping paper alternatives that are recyclable, such as reusable paper gift bags, brown kraft paper, maps, blueprints, posters, newspaper, or reusable options such as fabric.

For a limited time (Dec 26–Jan 31) RECYCLE AT THESE LOCATIONS:

- **Boulder County Recycling Center Drop-Off Center** in Single Stream Recycling bin
- **Longmont Waste Diversion Center** in Single Stream Recycling bin

NO metallic wrapping paper, ribbons, bows, ornaments, tissue paper, dark or fluorescent paper, or tape.



Food Scraps

COMPOST in curbside bins and at:

- **Eco-Cycle CHaRM**; facility fee applies
- **Longmont Waste Diversion Center**
- **Nederland Transfer Station & Recycling Drop-Off Center**

Cooking Oil

RECYCLE AT THESE LOCATIONS ONLY, NOT in curbside bins:

- **Eco-Cycle CHaRM**; facility fee applies
- **Longmont Waste Diversion Center**



Batteries

RECYCLE AT THESE LOCATIONS ONLY, NOT in curbside bins:

Rechargeable Batteries:

- **Boulder County Hazardous Materials Management Facility**
- **Longmont Waste Diversion Center**

Alkaline Batteries:

- **Boulder County Hazardous Materials Management Facility**



Holiday Cards

REUSE cards as next year's gift tags or place-setting cards.

RECYCLE in curbside bins and at drop-off centers. **NO cards embossed with foil or other non-paper material. NO non-paper items such as ribbons, photos, or photo paper.**

Dark Envelopes

COMPOSTABLE, NOT RECYCLABLE

Dark-colored envelopes such as reds and greens are not recyclable. White/light-colored paper envelopes are OK to recycle curbside.



Paper Shopping Bags & Cardboard Boxes

RECYCLE curbside or at drop-off centers. Large staples & shiny graphics OK. **REMOVE non-paper handles (synthetic string, etc.) and metal grommets.**

Packing Peanuts

REUSE ONLY, NOT RECYCLABLE

Take to packing & shipping stores; find locations at ecocycle.org/a-zguide.

Bubble Wrap

RECYCLE AT **Eco-Cycle CHaRM**, **Longmont Waste Diversion Center**, and participating plastic film recycling collections, NOT in curbside bins.

Tissue Paper WITHOUT TAPE, GLITTER, ETC.

COMPOST in curbside bins and at these locations:

- **Eco-Cycle CHaRM**; facility fee applies
- **Longmont Waste Diversion Center**

NO glitter, tape, or other non-paper items.



Electronics & Appliances

RECYCLE AT THESE LOCATIONS:

- **Eco-Cycle CHaRM**; facility fee applies
- an e-Steward certified recycler such as those listed here: e-stewards.org/find-a-recycler

Disposing of electronics in the trash is illegal in Colorado.



Holiday String Lights & Extension Cords

RECYCLE AT THESE LOCATIONS ONLY, NOT in curbside bins

- **Eco-Cycle CHaRM**; facility fee applies
- **Nederland Transfer Station and Recycling Center**
- **Longmont Waste Diversion Center**
- **Allenspark Drop-Off Center**

Attached light bulbs are OK.

Please bundle cords & tie with the loose end so they don't get caught in machinery.



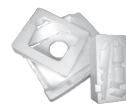
Plastic Bags

Includes grocery bags, dry-cleaner bags, and zip-top baggies (no zip pouches from prepackaged foods).

RECYCLE AT THESE LOCATIONS ONLY, NOT in curbside bins:

- **Eco-Cycle CHaRM**; facility fee applies
- **Longmont Waste Diversion Center**
- Find other locations at ecocycle.org/a-zguide

Bags must be clean, dry, and empty. NO tape. Plastic bags are NOT recyclable in curbside bins. For details, visit ecocycle.org/charm-guidelines.



#6 White Block Foam (aka Styrofoam®)

RECYCLE AT THESE LOCATIONS ONLY, NOT in curbside bins:

- **Eco-Cycle CHaRM**; facility fee applies
- **Longmont Waste Diversion Center**

This is the material typically used to package computers, TVs, etc.

NO food-grade foam (to-go containers, meat trays, egg cartons, disposable cups, etc.), moisture, tape, packing peanuts (see listing), bubble wrap (see listing), bendable foam, any foam other than #6, or any color other than white.

Drop-Off Centers in Boulder County

Boulder County Recycling Center

1901 63rd St., Boulder; open 24 hours

Boulder County Hazardous Materials Management Facility (HMMF)

1901 63rd St., enter at the Boulder County Recycling Center, follow signs. To schedule an appointment, visit bouldercounty.org/environment/hazardous-waste/

Eco-Cycle/City of Boulder Center for Hard-to-Recycle Materials (CHaRM)

6400 Arapahoe Rd., Boulder.

Co-located with Resource Central.

Open Mon–Sat, 9 am–5 pm; closed Sundays.

Fees apply for some materials. To learn more, visit ecocycle.org/charm

Longmont Waste Diversion Center

140 Martin St., Longmont.

For residents only. Bring your ID and a recent utility bill to show you are a City of Longmont trash subscription customer.

Staffed hours: Mon–Sat, 8 am–4 pm.

Single-stream recycling drop-off open 24/7.

Closed Dec 24–26 and Dec 31–Jan 2.

longmontcolorado.gov/departments/departments-n-z/trash-and-recycling/waste-diversion-center

Nederland Transfer Station & Recycling Drop-Off Ctr.

286 Ridge Road, Nederland

Hours: Thurs–Tues, 8 am–4 pm.

Closed Dec 24 (half day) and Dec 25, and

Dec 31 (half day) and Jan 1.

bouldercounty.org/environment/trash/nederland-transfer-and-recycle

Allenspark Transfer Station & Recycling Drop-Off Ctr.

County Rd 84 & State Hwy 7

Open Sun, Mon, Wed, Fri, Sat; 10 am–4 pm

Closed Dec 24 (half day) and Dec 25, and Dec 31

(half day) and Jan 1. bouldercounty.org/environment/trash/allenspark-transfer-and-recycle/

Lyons Drop-Off Recycling Center

198 2nd Ave, on the south side of the lot.

Open daily, 7 am–7 pm

Tree Recycling Programs

Remove all decor, tinsel, lights, stands, wire, etc.

Boulder County/City of Boulder: Accepting trees from Boulder County residents for free from 12/31/22–1/31/23 at Western Disposal, 2051 63rd St. Trees can also be picked up curbside on your residential compost day until Jan 31 (if tree is longer than 6 feet, please cut the top off and place in the compost bin).

Erie: Accepting trees of less than 12-inch diameter year-round (weather permitting). Open daily, 8 am–4 pm, 1000 Briggs St., Erie. ID required.

Lafayette: Accepting Christmas trees 12/27/22–1/27/23 at 1700 Avalon Ave; Mon–Fri; 6 am–2 pm. *Closed 1/2/23 and 1/16/23 for Martin Luther King Jr. Day. Flocked trees not accepted.

Louisville: Accepting trees 1/7–1/8/22, 8 am–4 pm at the Branch Recycling Site. Louisville ID required. Trees can also be collected on your residential curbside compost day if cut into pieces that fit in the cart with the lid closed.

Longmont: Accepting trees at the Waste Diversion Center year-round; Mon–Sat, 8 am–4 pm.

Superior: Accepting trees 12/26/22–1/31/23, 8 am–5 pm daily at 2125 Honey Creek Lane.