

How to

RECYCLE AT THE CHaRM

eco-cycle® & CITY OF BOULDER CENTER FOR HARD-TO-RECYCLE MATERIALS

6400 Arapahoe Rd., Boulder • Open Mon–Sat, 9am–5pm (closed Sundays) • ecocycle.org/charm

THE ITEMS LISTED ARE ACCEPTED AT THE CHaRM ONLY • DO NOT PUT THEM IN CURBSIDE BINS

ELECTRONICS



TVs, VCRs & DVD Players,
Satellite Boxes



Video Game Systems



Printer/Copy Machines, Fax Machines,
Printers & Printer Cartridges



Mobile Phones, Office
Phones, Home Phones



Laptops, Computers &
Monitors



Tablets & Cameras

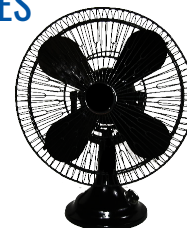


Computer Accessories,
Keyboards, Mice, Cables



Audio Equipment

SMALL APPLIANCES: WILL USUALLY HAVE CORDS OR INTERNAL BATTERIES



NO: vacuum bags, glass (coffee pots, blender carafes, etc.), or food/liquid residue

Check website for current rates: ecocycle.org/charm. Prices subject to change.

Have metal appliances? See Scrap Metal listing.

HARD-TO-RECYCLE PLASTICS: MUST BE CLEAN, DRY & EMPTY



Plastic Bags



Plastic Bubble Wrap



Foam Packing Sheets



Newspaper Bags



Ziploc Bags

NO moisture, receipts, food waste in bags, biodegradable plastic, tape, or packing peanuts

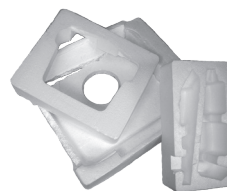
Check website for current rates: ecocycle.org/charm. Prices subject to change.

BIG DURABLE PLASTICS: MARKED WITH A #2 OR #5



NO: flower pots without a #2, inflatable pools or other inflatable plastics, water beds, chew toys, CD jewel cases, small toys such as action figures, plastic clothes hangers, etc.

#6 WHITE BLOCK FOAM



White Block Foam Packaging (aka Styrofoam®) may be marked #6

NO: packing peanuts, polystyrene (aka Styrofoam®) cups/to-go boxes, moisture, or tape.

SCRAP METAL: ITEMS THAT ARE AT LEAST 50% METAL, INCLUDING APPLIANCES



NO: propane tanks or canisters of any kind. Have a tank or canister? Visit ecocycle.org for details.

REMOVE fuel caps and lids; safely **DRAIN** all liquids, including gasoline and oil, which can be taken to the Household Hazardous Materials Management Facility.

MISCELLANEOUS



Bikes, Parts, Tires & Inner Tubes

NO other accessories or sporting goods



Books & Manuals

(Computer & office manuals, hard-bound and paperback books)



Concrete

(Accepted in small quantities of less than a small pick-up truck bed.)

NO metal or rocks; clean and free of aggregate



Vegetable-Based Cooking Oil

NO motor oil or any oil used for purposes other than cooking



Fire Extinguishers

All sizes and conditions accepted.



Mattresses & Box Springs

- Standard spring, memory foam, or futon mattresses.
- Box springs of any size.
- Mechanical beds.
- 100% foam mattress toppers.

We cannot accept bed bug-infested mattresses or box springs at the CHaRM. NO mattresses or box springs with mold.



Porcelain Toilets, Sinks & Urinals

Please note that the cost to recycle an intact unit is substantially higher than for units that already have all non-porcelain parts removed—see website for current fees. Porcelain must be clean.

NO biohazards.



Reusable Shoes & Textiles

- Paired, reusable shoes (no mud).
- Clothing, sheets, blankets, towels, and fabrics.
- Items may be stained or ripped, but must be clean.

NO bathing suits, socks, underwear, rugs, carpet, curtains, or pillows.

NEW MATERIALS ACCEPTED AT THE CHaRM



Drinkware and Glass Plates, Bowls, Vases, etc.

No ceramics or oven-safe glass (for example, Pyrex cookware or containers).



Solar Panels
Commercial or household panels accepted.

OTHER MATERIALS

PAPER SHREDDING

- Paper materials only; remove all labels, tape, plastic, plastic windows on envelopes, and other non-paper materials.

NO plastic binders, steel binder clips, or already shredded paper.

SINGLE-STREAM RECYCLING

COMPOSTABLES