

**Z
E
R
O**



**ECO-CYCLE
GUIDE**

eco-cycle®

**W
A
S
T
E**



**NEW
COMPOST
GUIDELINES**



YOUR PATH TOWARD **ZERO WASTE** STARTS HERE!

Discover the tools, resources, facilities, and services available to help you reduce waste, recycle, compost, and more!



RECYCLE
page 6



Recycling is a critical part of a sustainable, circular economy and crucial to saving natural resources, including water and energy, and creating more green jobs!



More than 40% of our climate impact in the US comes from “consumption emissions.” The more we buy and throw away, the more energy it takes to make new stuff, accelerating climate change. Refusing items we don’t need, and reducing our consumption, saves energy and natural resources.

**REFUSE
AND REDUCE**
page 4

REUSE
page 5



There are countless ways you can choose to reuse in your daily life—everything from carrying your own refillable water bottle, to repairing a broken item, to donating good-quality clothing and household items, to shopping at secondhand stores!



COMPOST

page 10



A common misconception is that food scraps and yard trimmings will simply rot in the landfill like they would in nature. However, landfills shut out oxygen and light, and when food, plants, and other organic materials decompose in these conditions, they produce methane—a greenhouse gas that is 84 times more powerful than carbon dioxide at trapping heat in the atmosphere!

Composting not only prevents methane generation at landfills, it also produces a valuable soil amendment that helps draw down carbon already in the atmosphere!



Visit the Eco-Cycle/City of Boulder Center for Hard-to-Recycle Materials (CHaRM), where many items that you can't recycle in your curbside recycling bin are accepted! Bring in your electronics, small appliances, plastic film, scrap metal, and more!



HARD-TO-RECYCLE MATERIALS

page 12



Wondering what to do with old paint, small propane canisters, hazardous liquids, CFL bulbs, motor oil, and other household hazardous waste? Bring these



items to the Boulder County Hazardous Materials Management Facility.

HAZARDOUS MATERIALS

page 14

SEE ALSO:

- Landfill Guidelines, page 16
- Zero Waste Facilities & Resources, page 17
- Recycle Row in Boulder, page 19
- Longmont Waste Diversion Center, page 19
- Tools & Resources, page 20
- Circularity: The Choice for a Hopeful Future, page 22

Refuse & Reduce These SINGLE-USE ITEMS

As we go about our days, ordering takeout and making stops at coffee shops, it's easy to pick up unnecessary waste. These items may seem like innocent gestures of convenience, but each material has its own history of natural resource extraction, pollution, water consumption, and carbon impact. REFUSING single-use, wasteful products and REUSING durable, long-lasting items instead is key to living a Zero Waste lifestyle!

Here's our start-up guide for disposables to avoid and their reusable, durable alternatives.*

REFUSE

USE INSTEAD



PLASTIC BAGS

Americans dispose of more than 100 billion plastic bags every year, and only a fraction are ever recycled. Up to 100 MILLION barrels of oil are needed to make the world's plastic bags each year. Yet, typical usage of a plastic bag is just 20 minutes.

→ **Instead, stock up on reusable bags and totes.**



FOAM CUPS & CONTAINERS

Polystyrene foam, commonly called Styrofoam, contains styrene, a known carcinogen that can leach chemicals into food and drinks. Because polystyrene is so light, it can easily blow away and crumble into microplastics that pollute soil and water for centuries.

→ **Instead, bring your own cups for beverages and reusable containers to hold leftovers.**



PLASTIC WATER BOTTLES & PLASTIC-COATED PAPER COFFEE CUPS

Bottled water uses more than 17 million barrels of oil per year to produce, and is often just tap water sold at 10,000 times the price. An estimated 50 billion paper coffee cups are thrown away in the US every year; these paper cups are lined with plastic and are not typically recyclable.

→ **Instead, remember to bring your own water bottle and travel mug.**



PLASTIC UTENSILS & STRAWS

About 40 billion plastic utensils are used in the US each year for just a few minutes before they are discarded and sent to the landfill because they are not recyclable. Lightweight plastics like utensils and straws often end up in the environment.

→ **Instead, carry your own set of reusable utensils with you.**



***Combine all the reusables listed on this page to create your own Zero Waste on-the-go kit!**

REUSE RESOURCES

around Boulder County

You do your best to reuse. You bring your own reusable bag, coffee mug, and water bottle, but the system works against you—“convenient” disposables are everywhere, from to-go containers to throw-away fast fashion. But all that is changing! New systems and programs in Boulder County and beyond are making it increasingly easy to choose to reuse, and they grow as participation increases!

TAKE A TOUR DE THRIFT



Shop secondhand stores and online exchange sites before you head to the store to buy something new! Our Tour de Thrift map will help you find secondhand stores throughout Boulder County. This custom map allows you to browse local used furniture stores, consignment shops, thrift stores, and more! Find the map at ecocycle.org/tour-de-thrift.



REUSABLE FOOD TAKE-OUT AND DELIVERY SERVICES

According to an Upstream report, nearly one trillion disposable food service products are used each year in the United States. Many of these products are not recyclable, including polystyrene containers, plastic-coated cups, straws, and plastic utensils. New companies are emerging that provide reusable take-out and delivery options for local diners, including:

- **DeliverZero:** stocks businesses with long-lasting, returnable take-out containers that diners can opt to use when ordering from participating Boulder restaurants.
- **r.Cup:** provides reusable cups to entertainment venues, college and corporate campuses, and events.

Check to see if a restaurant offers reusable container service when placing your to-go order. Select the option for reusables, pay a very nominal reuse fee, then return the container when you're finished (or have it picked up). Not seeing the service? Tell your favorite restaurant you'd love them even more if they signed up to use the service (it's at NO COST to them!).

SHOP PACKAGE-FREE

Shopping at local bulk stores makes it easy to skip packaging altogether by filling your own containers (or containers provided in-store) with grocery goods! Here are two local Zero Waste stores that create a whole new norm for package-free shopping:



Nude Foods, Boulder

Nude Foods offers over 1,000 items in bulk or in reusable packaging! Empty packaging can be returned to the store, where it is sanitized and reused. Nude Foods also offers online ordering and delivery services (using an electric vehicle)! If you're throwing a party soon, don't miss out on their Zero Waste Party Packs!



Simply Bulk, Longmont

Simply Bulk encourages customers to “pay for the product, not the packaging” by bringing in their own clean containers to fill up with products. The Main Street store offers food, pet supplies, personal care supplies, and more, including a bulk-size block of soap where you can cut off and purchase only the amount you need!

TAKE CARE TO REPAIR

When we casually discard a broken product, we not only add to the growing problem of waste around the world—we also waste all the energy and materials that went into making the product. Instead, try repairing your item! One free service is the Boulder U-Fix-It Clinic, where people bring all sorts of broken appliances, lamps, toys, electronics, clothing, and jewelry, and work with volunteer coaches to learn hands-on repair skills. Find clinic dates at boulderufixitclinic.org.



RECYCLE



Do not bag your recyclables—place them loose in your recycling bin

No embolse sus materiales reciclables, pongalos sueltos en su bote de reciclaje

PAPER AND CARDBOARD



PAPEL Y CARTÓN



flatten cardboard
aplane el cartón

CONTAINERS

EMPTY & RINSE, DO NOT FLATTEN



remove metal lids
remueva las tapas de metal

empty
vacíos



food and beverage cartons
reattach plastic caps
vuelva a colocar las tapas de plástico

ENVASES

VACÍE Y ENJUAGUE, NO LOS APLANE



shape foil into balls 2" or larger
forme bolas de papel de aluminio de 2" o más

PLASTIC BOTTLES, TUBS, JUGS, AND JARS

EMPTY & RINSE, DO NOT FLATTEN



reattach plastic screw-top caps
vuelva a colocar las tapas de rosca de plástico

BOTELLAS, TINAS, JARRAS Y FRASCOS DE PLÁSTICO

VACÍE Y ENJUAGUE, NO LOS APLANE



prescription bottles
(must be larger than 2" in diameter)

frascos de prescripción (deben tener más de 2" de diámetro)

only sturdy, reusable #2 and #5 "souvenir cups"
sólo los "vasos de promoción" #2 y #5 se pueden reciclar



When in doubt, give us a shout!
303.444.6634 / recycle@ecocycle.org

¡Si tiene alguna duda, comuníquese con nosotros!



eco·cycle

PLASTIC CLAMSHELLS, LIDS, AND TAKE-OUT CONTAINERS

NO FOOD



berry containers and other plastic clamshell containers
(no foam/polystyrene; remove liner)
*recipientes para frutas rojas y otros recipientes de plástico transparente
(no espuma/poliestireno; remueva el forro interior)*

CONTENEDORES TRANSPARENTES DE PLÁSTICO, TAPAS Y CONTENEDORES PARA LLEVAR

SIN COMIDA



take-out containers
(no food)
*contenedores para llevar
(sin comida)*



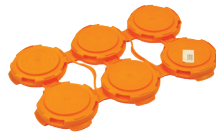
plastic tub lids
tapas de recipientes plásticas

RIGID PLASTICS

#2 AND #5 ONLY



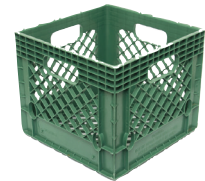
flower pots
macetas



hard plastic four- and six-pack holders
porta bebidas de cuatro y seis unidades de plástico duro



buckets, handles OK
ubetas se pueden dejar las manijas



plastic crates
cajas de plástico

PLÁSTICOS RIGIDOS

SÓLO #2 Y #5

NOT RECYCLABLE IN SINGLE-STREAM CURBSIDE RECYCLING BIN NO RECICLABLE EN EL BOTE DE RECICLAJE DE FLUJO ÚNICO



food and liquids
comida y líquidos



compostable serviceware
productos etiquetados como compostables



plastic bags
bolsas de plástico



plastic film / cling wrap
protectores de plásticos / envoltura de plástico



foam / #6 polystyrene
espuma / poliestireno #6



lotion / toothpaste tubes
tubos de crema / pasta dental



frozen food boxes
cajas de comida congelada



plastic-coated paper
papel recubierto en un plástico



plastic cups
vasos de plástico



latex gloves
guantes de látex



scrap metal
restos de metal



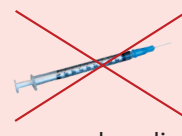
drinking glasses / ceramics
vasos de vidrio / cerámica



shredded paper
papel triturado



prescription bottles less than 2" in diameter
frascos de prescripción de menos de 2" de diámetro



sharps and medical waste
objetos punzantes / residuos medicos



explosive / hazardous materials
materiales explosivos / peligrosos



RECYCLING'S DIRTY DOZEN

CONTAMINATION IN RECYCLING BINS IS A HUGE PROBLEM. DO YOUR PART BY RECYCLING RIGHT! **BELOW ARE ITEMS TO KEEP OUT OF YOUR RECYCLING BIN.**

LA CONTAMINACIÓN DE LOS CONTENEDORES DE RECICLAJE ES UN GRAN PROBLEMA. ¡CONTRIBUYA RECICLANDO BIEN! **A CONTINUACIÓN SON ARTÍCULOS QUE NO DEBEN IR AL CONTENEDOR DE RECICLAJE.**

NO: INCORRECTLY PREPPED MATERIALS / MATERIALES PREPARADOS INCORRECTAMENTE



1 **CONTAINERS WITH FOOD OR LIQUID RESIDUE / RECIPIENTES CON COMIDA Y LÍQUIDOS**

Please empty and rinse containers before putting them in the recycling bin.

2 **RECYCLABLES IN PLASTIC BAGS / ARTÍCULOS RECICLABLES EN BOLSAS DE PLÁSTICO**

Please place your recyclables loose in your recycling bin.

Don't flatten containers. Empty and rinse containers before recycling. No aplane los recipientes. Vacíe y enjuague los MOTOR OIL, BEAR SPRAY, OR SOLVENTS

NO: LIQUIDS, FOOD, OR YARD TRIMMINGS / NO LÍQUIDOS, COMIDA, O RECORTES DE JARDÍN

3 **FOOD & LIQUIDS / COMIDA Y LÍQUIDOS**

Please empty and rinse containers before putting them in the recycling bin.



4 **YARD & PLANT TRIMMINGS / RECORTES DE JARDÍN Y PLANTAS**

INSTEAD: Compost food scraps and yard trimmings (see guidelines on page 10). AL CONTRARIO: Composte las sobras de comida y recortes de jardín y plantas (vea las pautas de compostar en la página 10).

NO: HARD-TO-RECYCLE MATERIALS / MATERIALES DIFÍCILES DE RECICLAR

5 **PLASTIC BAGS / BOLSAS PLÁSTICAS** (binds up sorting equipment)

6 **SCRAP METAL / DESECHOS DE METAL** (damages equipment)



7



DRINKING GLASSES / VASOS DE VIDRIO (not the same melting temperature as recyclable glass)

INSTEAD: Recycle these items at the Eco-Cycle CHaRM (see guidelines on page 12). AL CONTRARIO: Recicle estos artículos en CHaRM (vea las pautas de CHaRM en la página 12).

NO: LANDFILL ITEMS / ARTÍCULOS DE LA BASURA



8 **NON-RECYCLABLE PLASTICS / PLÁSTICOS NO RECICLABLES** (including compostable plastics)



9 **FROZEN FOOD BOXES OR ICE CREAM CONTAINERS / EMPAQUES DE COMIDA CONGELADA O RECIPIENTES DE HELADO** (their plastic coatings render them non-recyclable)

INSTEAD: Put these items in the trash (see guidelines on page 16). AL CONTRARIO: Coloque estos artículos en la basura (vea las pautas de basura en la página 16).

NO: HAZARDOUS MATERIALS / MATERIALES PELIGROSOS



10 **MOTOR OIL, BEAR SPRAY OR SOLVENTS / ACEITE PARA MOTOR, SPRAY PARA OSO O SOLVENTES**

11 **SYRINGES, NEEDLES, AND SHARPS / JERINGAS, AGUJAS, PRODUCTOS SANITARIOS CORTANTES**



12 **TUBE LIGHTING AND LIGHT BULBS / TUBOS DE ILLUMINATION Y BOMBILLAS** (CFLs can be recycled at specialty facilities; put LED light bulbs in the trash)



INSTEAD: Take these items to the Hazardous Materials Management Facility (see guidelines on page 14). AL CONTRARIO: Lleve estos artículos al Centro de Manejo de Materiales Peligrosos (HMMF, por sus siglas en inglés; vea las pautas en la página 14).

PACKAGING & MAILERS

LOS MATERIALES DE EMBALAJE Y CORRESPONDENCIA

If you're not able to reuse packaging and mailing materials, follow these guidelines to find out what is recyclable, what is trash, and which items can be accepted at Eco-Cycle's Center for Hard-to-Recycle Materials (CHaRM).

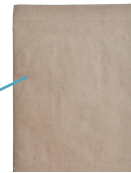
SINGLE-STREAM RECYCLING / RECICLAJE



Cardboard boxes and paperboard envelopes
(remove plastic sleeves on the mailer)
Cajas de cartón y sobres de papel únicamente



Plain paper mailers and WHITE or PASTEL envelopes
(if envelope is a dark color, try the rip test*)
Sobres de papel normal y sobres de colores pastel (si el sobre es de color oscuro, haga la prueba de rotura**)



Paper mailer padded with paper fibers
Sobre forrado de papel (forrado con fibras de papel)

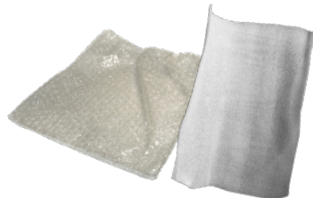


Paper packing sheets
Hojas de embalaje de papel

BRING IT TO THE ECO-CYCLE CHaRM / LLÉVELO A CHaRM



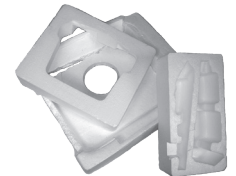
Plastic packing "pillows"
Almohadillas de plástico para embalaje



Bubble wrap or thin, flexible foam packing sheets
Empaque plástico de burbujas o hojas de embalaje de espuma



Plastic mailers, unlined or lined with bubble wrap
Sobres de plástico (sin forro o forrado con plástico de burbujas)



White #6 block foam
Bloque blanco de espuma #6

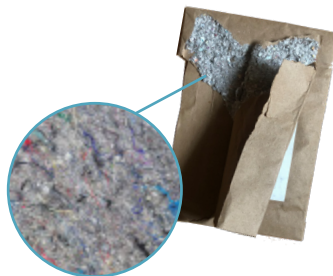
LANDFILL / BASURA



Paper mailer padded with bubble wrap
Sobres de papel acolchados con plástico de burbujas



Gift tissue paper
Papel silueta de regalo

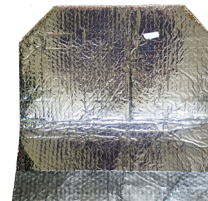


Paper mailer padded with textile fibers
Sobres de papel acolchados con fibras textiles



Packing peanuts (often accepted for reuse by packaging stores)
Trozos de espuma de embalaje (a menudo aceptados para su reutilización por las tiendas de embalaje)

Foil or metallic mailers
Sobres de aluminio o metal



Dark or bright paper envelopes*
Sobres de papel oscura y brillante**

* **Envelope rip test:** Rip any dark-colored envelope. If the fibers inside are white, RECYCLE it! If the fibers inside are colored, LANDFILL it.

** **Prueba de rotura del sobre:** Rasga el sobre de color oscuro. Si las fibras del interior son blancas, ¡RECÍCLELO! Si las fibras del interior tienen color, BASURA QUE.

eco-cycle®



COMPOST

FOOD SCRAPS / *DESPERDICIOS DE COMIDA*

Remove stickers, twist ties, rubber bands, and packaging.

Sin etiquetas, alambres de plástico, ligas, o empaquetado.



Coffee grounds and beans
(no filters)

*Café molido y en grano
(sin filtros)*



NO COMPOST BAGS

Small countertop compost bags
(3 gallons) accepted

NO BOLSAS DE COMPOST

*Se aceptan bolsas de compost
chicas (3 galones)*

YARD & PLANT TRIMMINGS / *RECORTES DE JARDÍN Y PLANTAS*



Flower bouquets
(no string or elastic bands)

Ramo de flores (no cuerdas o bandas)



NO PAPER YARD BAGS

**NO BOLSAS DE PAPEL PARA
CORTES DE SU JARDÍN**

**THESE ITEMS ARE NO LONGER ACCEPTED IN CURBSIDE COMPOST. PUT THESE ITEMS IN THE TRASH.
ESTOS ARTICULOS YA NO SE ACEPTAN EN COMPOST. PONGA ESTOS ARTICULOS EN LA BASURA.**

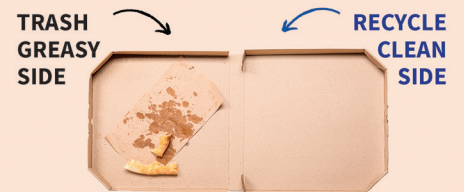


NO FOOD SERVICEWARE
including products labeled as
compostable

NO UTENSILIOS DE COMIDA
*incluyendo productos etiquetados
como compostables*



NO PAPER PRODUCTS
NO PRODUCTOS DE PAPEL



NO GREASY PIZZA BOXES
Trash greasy side and
recycle clean side.

NO CAJAS DE PIZZA GRASOSAS
Ponga la mitad grasosa en la basura
y la mitad limpia en el reciclaje.



When in doubt, give us a shout! 303.444.6634 / recycle@ecocycle.org
Si tiene alguna duda, comuníquese con nosotros!

eco-cycle®



Compost Guidelines Have Changed

In 2023, compost guidelines for Colorado's Front Range communities were simplified to accept **FOOD SCRAPS AND YARD TRIMMINGS ONLY**. Here's why.

Where do our compost discards go?

Your compost cart is a soil maker! When organic materials like food scraps and yard trimmings are composted here in Boulder County and in most Front Range communities, they are taken to the largest compost manufacturer in the state. There, these organic materials are turned into a nutrient-rich finished compost soil amendment that helps build healthy soil, critical to growing more robust plants, conserving water, and to supporting a diversity of soil life. Applying compost to soils actually reverses climate change by removing and storing carbon dioxide from the atmosphere.

Why did compost guidelines change?

Contaminants such as glass, plastic, and even diapers were ending up in compost carts all along the Front Range. These contaminants cannot be easily removed in the compost process and can wind up polluting soils, waterways, and our food. For compost to reach its full potential as a climate solution, it needs to be a clean, valuable product for use by farmers and gardeners.

To keep compost **CLEAN**, our regional compost manufacturer decided to greatly simplify compost guidelines to **FOOD SCRAPS AND YARD WASTE ONLY**.



Why can't I put certified compostable products in the compost?

Some products are deceptively labeled to look like they are compostable even though they actually contain petroleum-based plastics that are absolutely not compostable. The state of Colorado recently passed labeling requirements to prevent false or confusing compost claims on packaging, but it will take a while for labels to change.

If I can't compost them, can I recycle compostable cups, forks, etc.?

NO. Compostable products are plant-based, designed for the composting process. Recyclable plastics are petroleum-based and not compatible with plant-based polymers. Please **DO NOT** put your compostable materials in the recycling bin. These items must be landfilled.

We need your help to keep compost clean.

- Make sure you're putting **ONLY** food scraps or yard trimmings in your curbside compost bin.
- Help spread the word to others as to why it's important to keep compost clean.
- Choose to reuse to avoid the need for recyclable or compostable products (see page 4).



We have more information and tools that can help!



FAQs about the changes in compost guidelines



How to Compost in Your Backyard



Tips to reduce your food waste

What we accept at the

eco-cycle® & CITY OF BOULDER

CHaRM

CENTER FOR HARD-TO-RECYCLE MATERIALS

6400 Arapahoe Rd., Boulder
Open Mon–Sat, 9am–5pm • Closed Sundays



THE ITEMS LISTED ARE ACCEPTED AT THE CHaRM ONLY • DO NOT PUT THEM IN CURBSIDE BINS
View a list of all materials accepted and current fees at ecocycle.org/charm

ELECTRONICS



TVs, VCRs & DVD Players,
Satellite Boxes



Video Game Systems



Printer/Copy Machines, Fax Machines,
Printers & Printer Cartridges



Mobile Phones, Office
Phones, Home Phones



Laptops, Computers
& Monitors



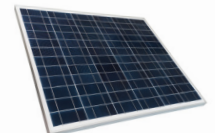
Tablets & Cameras



Computer Accessories,
Keyboards, Mice, Cables

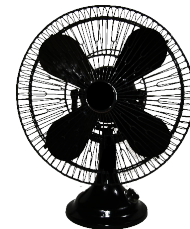


Audio Equipment



Solar Panels

SMALL APPLIANCES: WILL USUALLY HAVE CORDS OR INTERNAL BATTERIES



NO vacuum bags, glass (coffee pots, blender carafes, etc.), food/liquid residue, or biohazards
Have metal appliances? See Scrap Metal listing on next page.

HARD-TO-RECYCLE PLASTICS: MUST BE CLEAN, DRY & EMPTY



Plastic Bags



Plastic Bubble Wrap



Foam Packing Sheets



Newspaper Bags



ziplock bags

NO moisture, receipts, food residue, biodegradable plastic, tape, or packing peanuts

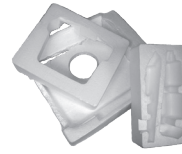
BIG DURABLE PLASTICS: MARKED WITH A #2 OR #5



Items must be less than 3 feet in diameter

NO flower pots without a #2 or #5, inflatable pools or other inflatable plastics, water beds, chew toys, CD jewel cases, small toys such as action figures, plastic hangers, gas cans, etc.

#6 WHITE BLOCK FOAM



NO packing peanuts, polystyrene (aka Styrofoam®) cups/to-go boxes, moisture, or tape

White Block Foam may be marked #6

SCRAP METAL: ITEMS THAT ARE AT LEAST 50% METAL BY WEIGHT, INCLUDING APPLIANCES



NO propane tanks or canisters of any kind. REMOVE fuel caps and lids; safely DRAIN all liquids, including gasoline and oil, which can be taken to the Hazardous Materials Management Facility.

MISCELLANEOUS



Bikes, Parts, Tires & Inner Tubes

NO other accessories or sporting goods



Books & Manuals

(Computer & office manuals, hard-bound and paperback books)



Concrete

(Accepted in small quantities of less than a small pick-up truck bed)

NO metal or rocks; clean and free of aggregate



Vegetable-Based Cooking Oil

NO motor oil or any oil used for purposes other than cooking



Fire Extinguishers, Smoke Detectors & Carbon Monoxide Detectors

(All sizes and conditions of extinguishers accepted)



Mattresses & Box Springs

(Includes any size box spring or standard spring, memory foam, or futon mattress; mechanical beds; and 100% foam mattress toppers)

We cannot accept bed bug-infested mattresses or box springs at the CHaRM. NO mattresses or box springs with mold.



Drinkware & Glass Plates, Bowls, Vases, etc.

NO ceramics, oven-safe glass (for example, Pyrex cookware or containers), or plate glass



Porcelain Toilets, Sinks & Urinals

(The cost to recycle an intact unit is substantially higher than for units that have all non-porcelain parts removed)

Clean porcelain only—NO biohazards



Ceramic Tile

NO stone tiles or tiles with netting on the back



Document Shredding

(Paper materials only)

NO ALREADY SHREDED PAPER. NO plastic binders or big binder clips, bags, or boxes.



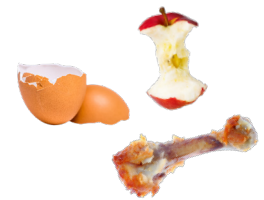
Freon Appliances

(All sizes of refrigerators, freezers, air-conditioning units & dehumidifiers)



Single-Stream Recycling

(See recycling guidelines on page 6)



Food Scraps

(Remove stickers, twist ties, rubber bands, and packaging)

NO certified compostables or paper products

HAZARDOUS MATERIALS

MATERIALES PELIGROSOS

Please take these materials to the **Boulder County Hazardous Materials Management Facility (HMMF)**. Residential appointments are recommended at boco.org/HMMFappointment. The HMMF accepts hazardous materials from businesses by appointment only at boco.org/HMMFbizappt.

Note: These items are not accepted at the Eco-Cycle Center for Hard-to-Recycle Materials (CHaRM) located at 6400 Arapahoe Road, Boulder.

HAZARDOUS LIQUIDS / LÍQUIDOS PELIGROSOS



Cleaning solvents
Solventes de limpieza



Antifreeze
Anticongelante



Motor oil
Aceite para motores



Bleach
Detergente líquido
blanqueador



Gasoline
Gasolina

HOUSEHOLD HAZARDOUS ITEMS / ARTÍCULOS PELIGROSOS PARA EL HOGAR

Light bulbs: Fluorescent, CFL, grow lights

Bombillas: Fluorescentes, CFL, luces de crecimiento para



No LED, halogen, or incandescent light bulbs
No se aceptan bombillas LED, halógeno, or incandescentes



Spray paint
Pintura en aerosol



Paint
Pintura



Stain
Tinte de color



Fertilizer
Fertilizador



Weed spray
Fumigador de maleza



Plant food
Comida para plantas



Pool cleaner
Limpiador de piscinas



Syringes, needles, and sharps
Jeringas, agujas, productos sanitarios cortantes

In approved sharps container only

Solo en recipientes aprobados para productos cortantes



Hazardous Materials Management Facility
720.564.2251 • 1901c 63rd St., Boulder, CO 80301



BATTERIES / BATERIAS



Tape lithium batteries

VAPING ACCESSORIES / ACCESORIOS DE VAPEO



CYLINDER PROPANE TANKS / CILINDROS DE PROPANO



Propane cylinders 1 lb and under only
Solo cilindros de propano de 1 lb o menos

The following materials should be disposed of in the **TRASH**, *not* taken to the Hazardous Materials Management Facility.

*Estos materiales van a la **BASURA**, no al Centro de Manejo de Materiales Peligrosos.*

PUT THESE ITEMS IN THE TRASH:



Incandescent

Bombillas incandescentes



LED

Bombillas LED



Grout

Selladores



Paint brushes

Brochas para pintar



Used plastic paint cans

Tarros plásticos de pintura usados



Hazardous Materials Management Facility

1901c 63rd St., Boulder, CO 80301

Located west of (behind) the Boulder County Recycling Center

Ubicado al oeste, del Centro de Reciclaje del Condado de Boulder

Business waste appointments on Tuesdays. *Citas para desechos*

comerciales los martes. Residential waste on Wed-Sat, 8:30 a.m.-4 p.m.

Residuos residenciales de miércoles a sábado, de 8:30 a.m. a 4 p.m.



LANDFILL



PLASTIC-COATED PAPER

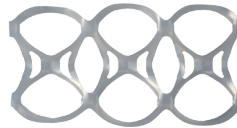


PRODUCTOS DE PAPEL CON RECUBRIMIENTO PLASTICO



NON-RECYCLABLE PLASTICS

PLÁSTICOS QUE NO SON RECICLABLES



WRAPPERS & FROZEN FOOD PACKAGING

ENVOLTURAS Y EMPAQUES DE COMIDA CONGELADA



NO LONGER ACCEPTED IN CURBSIDE COMPOST (PUT IN TRASH)

ESTOS ARTICULOS YA NO SE ACEPTAN EN COMPOST. PONGA ESTOS ARTICULOS EN LA BASURA.



PLEASE ALSO TRASH: FEMININE PRODUCTS, DIAPERS, ANIMAL WASTE & OTHER BIOHAZARDS.

POR FAVOR COLOQUE TAMBIEN EN LA BASURA: PRODUCTOS DE HIGIENE FEMENINA, PAÑALES, EXCREMENTO ANIMAL Y OTRAS SUSTANCIAS CON RIESGO BIOLÓGICO.

eco-cycle®

Where to find ZERO WASTE FACILITIES & RESOURCES

ALLENSPARK

Allenspark Transfer Station and Recycling Drop-off

Accepts bagged and loose garbage from households and small businesses for a fee. Single-stream recycling, textile recycling, and scrap metal recycling are accepted free of charge. Styrofoam, CFC appliances/refrigerators accepted for a fee. No slash is accepted at this facility.

Location: 14857 State Highway 7

Hours: Mon, Wed, Fri, Sat, Sun, 10–4; closed Tues & Thurs

Phone: 303.747.2107

bouldercounty.gov/environment/trash/allenspark-transfer-and-recycle

Meeker Park Forestry Sort Yard

Accepts logs, slash, timber, pine cones, needles, and leaves for drop-off.

Open mid-May to mid-October

Location: 8200 State Highway 7

Hours: Wed–Sat, 9–5

Phone: 303.678.6368

bouldercounty.gov/property-and-land/forest-health/community-forestry-sort-yards

BOULDER

Available to all Boulder County residents

Art Parts Creative Reuse Center

Accepts and sells new and used art supplies.

Location: 3080 Valmont Rd.

Hours: Mon–Sat, 10–6; Sun, 12–5

Phone: 720.379.5328

artpartsboulder.org

Boulder County/City of Boulder Yard & Wood Waste Drop-off Center at Western Disposal

The City of Boulder and Boulder County sponsor the yard waste drop-off center and wood waste drop-off center at Western Disposal. Residents receive a 40% discount from normal yard and wood waste drop-off pricing. Keep yard waste separate from wood waste.

Location: 2051 63rd Street

Hours: Mon–Sat, 7–5; closed Sundays

Phone: 303.444.5794

westerndisposal.com/trash-recycle-center/wood-yard-waste

Boulder County Hazardous Materials Management Facility

Drop-off and reuse for hazardous materials such as paint and household cleaners. For residents of Boulder County, City and County of Broomfield, and Town of Erie. Proof of residency will be checked upon entry.

Location: 1901 63rd St. (west of the Boulder County Recycling Center)

Hours: Wed–Sat, 8:30–4; closed to residents Sun, Mon, Tues

Phone: 720.564.2251

bouldercounty.gov/environment/hazardous-waste/management-facility

Boulder County Recycling Center & Drop-off Center

See pages 6–7 for materials accepted.

Location: 1901 63rd St.

Hours: Drop-off open 24 hours

Phone: 303.444.6634; 720.564.2220

bouldercounty.gov/environment/recycle/recycling-center

Eco-Cycle/City of Boulder Center for Hard-to-Recycle Materials

Accepts hard-to-recycle materials and scrap metal for recycling (see pages 12–13 for materials accepted).

Location: 6400 Arapahoe Rd. (co-located with Resource Central)

Hours: Mon–Sat, 9–5; closed Sun

Phone: 303.444.6634

ecocycle.org/charm

Resource Central: Materials Reuse Facility

Accepts and sells new and used building materials in good shape.

Location: 6400 Arapahoe Rd. (co-located with Eco-Cycle CHaRM)

Hours: Mon–Sat, 9–5; closed Sun

Phone: 303.419.5418

resourcecentral.org/reuse

BROOMFIELD

Broomfield Recycling Center

Broomfield residents ONLY.

Location: 225 Commerce St.

Hours: Drop-off Center: 24 hours, 7 days a week. Education Center:

Mon–Fri, 9–5

Phone: 303-438-6329

broomfield.org/310/Recycling-Center

ERIE

Erie Recycling Center

Accepts single-stream recycling and yard waste for drop-off.

Location: 1000 Briggs St. (next to Public Works building)

Hours: Daily, 8–4 (weather permitting)

Phone: 303.926.2880

erieco.gov/282/Recycling-Center

LONGMONT

Longmont Waste Diversion Center

Please be sure to bring a current City of Longmont utility bill and identification to show that you are a city resident paying the waste management fee. See details of everything accepted on page 19.

Location: 140 Martin St.

Hours: Mon–Sat, 8–4; closed Sundays and holidays

Phone: 303.651.8416

longmontcolorado.gov/wasteservices

LOUISVILLE

Louisville Branch Recycle Site

Proof of Louisville residency required. This site only accepts wood and plant material such as tree and shrub debris.

Open the first full weekend of each month from 8–4

Location: North side of cemetery on Hwy 42 & Empire Rd.

Phone: 303.335.4733

louisvilleco.gov/local-government/government/departments/public-works/leaf-branch-drop-off-collection

Louisville Leaf Drop-off Site: Louisville Sports Complex

Only leaves and grass clippings are accepted at the drop-off containers; no trash, branches, or plastic garbage bags. Proof of residency will be checked upon entry.

Open 10/16 thru 11/20

Location: 1200 Courtesy Rd.

Hours: Daily, 7–3

Phone: 303.335.4750

louisvilleco.gov/local-government/government/departments/public-works/leaf-branch-drop-off-collection

LYONS

Lyons Recycling Drop-off Center

Accepts single-stream recycling.

Location: 198 2nd Ave. (south side of lot)

Hours: Daily, 7–7

Phone: 720.564.2757

townoflyons.com/369/Sustainability-Resources-Waste

NEDERLAND

Nederland Forestry Sort Yard

Accepts logs, slash, timber, pine cones, needles, and leaves.

Open mid-May to mid-Nov

Location: 291 Ridge Rd.

Hours: Wed–Sat, 9–4:30

Phone: 303.678.6368

bouldercounty.gov/property-and-land/forest-health/community-forestry-sort-yards

Nederland Transfer Station and Recycling Drop-off Center

Single-stream recycling, textile recycling, and scrap metal recycling are accepted free of charge. Compostables, Styrofoam, CFC Appliances/refrigerators, mattresses recycled for a fee. Accepts bagged and loose garbage from households and small businesses for a fee. No slash is accepted at this facility.

Location: 286 Ridge Rd.

Hours: Mon, Tues, Thurs, Fri, Sat, Sun, 8–4; closed Wed

Phone: 303.258.7878

bouldercounty.gov/environment/trash/nederland-transfer-and-recycle

NIWOT

Niwot Recycling Drop-off Center

Accepts single-stream recycling.

Location: Niwot Loop Trailhead (north of Hwy 52 on N. 79th St.)

Hours: Open dawn to dusk

Phone: 720.564.2220

bouldercounty.gov/environment/recycle/drop-off-centers

SUPERIOR

Superior Yard Waste Recycling Facility

Yard waste site for **RESIDENTS ONLY** (not for commercial use). Bring ID or some form of resident identification when dropping items off.

Location: 2125 Honey Creek Ln.

Hours: Wed, 2–dusk; Sat and Sun, 8–dusk

Phone: 303.499.3675

superiorcolorado.gov/departments/parks-recreation-open-space/superior-yard-waste-site

OTHER RESOURCES

Don't see your item listed? Check out the Eco-Cycle A–Z Recycling Guide

Learn how and where to recycle 400+ items in Boulder County and the Denver Metro area.

ecocycle.org/a-z-guide

Download the Eco-Cycle A–Z Recycling Guide App! Available online at ecocycle.org and anywhere you download apps.

City of Boulder via Inquire Boulder

See a business that needs help complying with the Universal Zero Waste Ordinance? Use Inquire Boulder to report businesses, homes, HOAs, and apartment and condo complexes without recycling, compost, or trash service.

user.govoutreach.com/boulder/faq.php?cmd=shell

CU-Boulder Environmental Center

Offers a wide range of sustainability services and ways to get involved.

colorado.edu/center

U-Fix-It Clinics

Free hands-on repair clinics for electronics, toys, appliances, etc.

boulderufixitclinic.org

BUSINESS RESOURCES

City of Boulder's "Zero Waste Boulder" Website

Extensive Universal Zero Waste Ordinance toolkits and resources.

zerowasteboulder.com

Eco-Cycle CHaRM-on-the-Road Service

Commercial hauling for hard-to-recycle items; see website for a list of acceptable items.

ecocycle.org/charm-on-the-road

EnergySmart

For residential energy and water conservation services.

energysmartyes.com

PACE: Partners for a Clean Environment

Extensive free energy and water conservation tools and services for businesses.

pacepartners.com

Resource Central

Consultations and services for water and energy conservation; includes resources for residents.

resourcecentral.org

RESIDENTIAL RECYCLING & COMPOSTING CURBSIDE SERVICES IN BOULDER COUNTY

Boulder

All trash haulers are required to provide curbside compost and recycling. Contact local hauler for prices.

Erie

Trash and recycling haulers operating in the Town of Erie offer various levels of recycling services and options. Contact your hauler directly.

Lafayette

The City of Lafayette contracts with Republic Services for residential composting and recycling. For service information, contact Republic Services at 303.286.2400.

Longmont

The City of Longmont provides recycling, composting, and trash curbside collection for residents. For service information, contact the City of Longmont at 303.651.8416.

Louisville

The City of Louisville contracts with Western Disposal to provide recycling, composting, and trash curbside collection for residents. For service information, contact Western Disposal at 303.444.2037.

Lyons

Trash and recycling haulers operating in the Town of Lyons offer various levels of recycling services and options. Contact your hauler directly.

Superior

For residents of Original Town, Coal Creek Crossing, DOWNTOWN Superior, Sagamore, Calmante, and The Ridge: Contact Town Hall with questions about trash, recycling, and seasonal compost curbside collection at 303.499.3675.

For residents of Rock Creek Ranch and The Summit at Rock Creek Townhomes: contact Cherry Creek HOA Professionals at 303-693-2118. For questions relating to curbside compost services, contact Waste Connections at 303.288.2100.

RECYCLE ROW IN BOULDER

The City of Boulder is going for Zero Waste!

Visit zerowasteboulder.com for more info.

Facilities to help you practice Zero Waste



- 1** Resource Central
Accepts and sells new and used building materials in good shape.
6400 Arapahoe Rd. (co-located with Eco-Cycle CHaRM)
Mon–Sat, 9–5; closed Sundays | resourcecentral.org/reuse | 303.419.5418
- 2** Eco-Cycle/City of Boulder CHaRM:
Center for Hard-to-Recycle Materials
Accepts hard-to-recycle materials and scrap metal for recycling. See page 12 for details.
6400 Arapahoe Rd. (co-located with Resource Central)
Mon–Sat 9–5; closed Sundays | ecocycle.org/charm | 303.444.6634
- 3** Boulder County Recycling Center & Boulder Drop-off Center
See page 6 for materials accepted.
1901 63rd St. | Drop-off open 24 hours | 720.564.2220 • 303.444.6634
- 4** Boulder County Hazardous Materials Management Facility
Drop-off and reuse for hazardous materials such as paint and solvents.
1901 63rd St., west of (behind) Boulder County Recycling Center
Wed–Sat, 8:30–4 | 720.564.2251
bouldercounty.gov/environment/hazardous-waste/management-facility
- 5** Western Disposal
Accepts landfill waste, organics, construction & demolition (C&D) waste, and yard & wood waste for drop-off. City of Boulder residents can drop off yard waste at a 40% discount.
2051 63rd St.
Mon–Sat, 7–5; closed Sundays | westerndisposal.com | 303.444.5794

LONGMONT WASTE DIVERSION CENTER

140 Martin St. 303.651.8416 | Preguntas? Llame a 303.243.5820 | Cardboard and single-stream drop-off bins are available 24/7 for single-stream recyclables. Yard waste, food waste, Styrofoam drop-off, and metal drop-off areas open Monday–Saturday from 8–4. The Center is closed for holidays and may be closed for severe weather. Bring a current City of Longmont utility bill and identification. Visit longmontcolorado.gov/departments/departments-n-z/trash-and-recycling/waste-diversion-center for more information.



Single-stream recycling—accepted 24/7. See pages 6–7 for guidelines.

ACCEPTED DURING STAFFED HOURS ONLY:

Automotive and Rechargeable Batteries: Includes motorcycle and boat batteries. **NO alkaline batteries.**

Compostables Drop-Off: See page 10 for guidelines.

Cooking Oil: Must be in see-through plastic containers (gallon milk jugs or the original plastic containers or box cooking oil comes in).

Motor Oil & Antifreeze: Must be in separate see-through one-gallon containers (gallon milk jugs work best). Must also be securely capped and cannot be contaminated with other fluids. **Other chemicals (paint, solvents, etc.) are not accepted at this site.**

Plastic Bags: Includes plastic shopping and newspaper bags. Must be clean, dry, and empty. **NO moisture, receipts, or food waste inside bags, biodegradable plastic, tape, packing peanuts, or foam wrap.**

Scrap Metal: All types of scrap metal. **NO fencing, pressurized containers, electronics, appliances containing Freon.**

Shredded Paper: See bin marked “shredded paper.” **NO bagged material.**

#6 White Block Foam: Must be #6 white block foam packaging and rigid foam insulation only. **NO packing peanuts, Styrofoam cups or “to-go” boxes, moisture, or tape.**

Yard Waste: Tree limbs, branches, bushes, and unbagged leaves. Non-residents

and contractors will be charged a fee. **NO trash, plastic bags, lumber, sod, dirt, rock, or split rail fence material will be accepted.**

Free self-service mulch is also available at the Longmont Waste Diversion Center.

Call for more information about the City of Longmont’s:

- Paper shredding events
- Hard-to-recycle collection events for CHaRM items
- Large bulky items collection
- Household hazardous chemical drop-off days and yard waste collection events.

ECO-CYCLE ZERO WASTE TOOLS & RESOURCES

Going for Zero Waste? We've got the tools for you! Whether you're new to Zero Waste or a seasoned practitioner, we have the info you need to live more sustainably.

A-Z RECYCLING GUIDE

This guide will help you practice Zero Waste in Boulder County. Learn what is recyclable in your curbside bin, which items are compostable, where to donate clothes and other reusable goods, places to drop off hard-to-recycle materials, and more. Just type in the name of the item, and our app will tell you if it's recyclable, compostable, or can be donated for reuse. Download our app to your phone, or visit ecocycle.org/a-z-recycling-guide.



Or play our Recycling Sorting Game! Test your knowledge on what's recyclable and compostable in Boulder County! Play the game on the app or at ecocycle.org/recycling-game



STATE OF RECYCLING & COMPOSTING REPORT

While Colorado's recycling rate remains far below the national average, we highlight examples of nation-leading state policies, local actions, and entrepreneurial business models that could help build a statewide circular economy and vault Colorado to the top of the recycling world in the next five years. View the report at ecocycle.org/sorc.

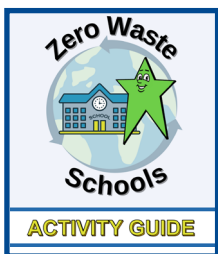
ZERO WASTE GUIDES FOR BOULDER COUNTY

A plethora of Zero Waste policies, facilities, and programs are available to you in Boulder County! **Use our Zero Waste Guides for Boulder County to find tools to help you make the most of all the Zero Waste resources our community has to offer.** These detailed guides show you how and where to reduce, reuse, repair, recycle, compost, and rethink your consumption habits. Find the guides at ecocycle.org/guides-for-boulder-county.





ZERO WASTE SCHOOLS ACTIVITY GUIDE



There is no better way to change society's wasteful habits than by educating and engaging children and their families. Our Zero Waste Schools Activity Guide

for schools, camps, and other settings that serve preschool through high school youth will bring your group closer to Zero Waste in creative and low-cost ways. Find the guide in our Resource Library, or at ecocycle.org/schools-guide.

... AND MORE!



Backyard Composting Guide

Follow these directions on how to produce compost in your backyard, from what to put in your pile, to how to maintain it, and how to use your finished compost.

Find the guidelines in our Resource Library, or at ecocycle.org/backyard-composting.



Holiday Guide

Did you know Americans create 25% more trash during the holidays? Our annual Holiday Guide will help you have a more meaningful, waste-free holiday season with tips you can apply year-round! Find the guide in our Resource Library, or at ecocycle.org/zero-waste-holiday.

ecocycle.org/zero-waste-holiday.



The Zero Waste Climate Solution Video

More than 40% of emissions come from the way we produce, consume, and dispose of our stuff. Here's how to significantly reduce our climate impacts today.

Find the video in our Resource Library, or at ecocycle.org/zw-climate-video.

ECO-CYCLE'S FREE RESOURCE LIBRARY

Explore our library of educational resources, reports, graphics, videos, and more! Our Resource Library offers over a hundred tools and resources produced by Eco-Cycle that will help you on your path to Zero Waste. All materials are free to view, download, print, and distribute.

Visit ecocycle.org/resource-library.



The Eco-Cycle Guide is also available online!

Check it out and share it with others at ecocycle.org/ecg.



CIRCULARITY

The Choice for a Hopeful Future

We are at a pivotal evolutionary moment in our human history as environmental crises—climate change, loss of biodiversity, dwindling natural resources, prolific plastic pollution—threaten our survival and

that of countless other species. All beings are experiencing the impacts, but communities that are already disproportionately disadvantaged are on the front lines. These challenges are giving rise to yet another crisis—one of mental health, particularly affecting our younger generations as they grapple with “climate anxiety” and uncertainty about their future.

The good news is, these accumulating crises are finally getting broad attention and making clear the choices we must make NOW. And that is hopeful.

In Eco-Cycle’s 48-year history of innovating, implementing, and advocating for Zero Waste solutions, we have never seen positive change occur more rapidly. All sectors of our community—government, businesses, schools, community members—are coming to the understanding that our broken production and societal systems need reform, and we must work together to fix them.

If we want real change, we need to consciously choose between two systems, one representing the status quo and the other a transformative future:

✗ Our broken one-way linear economy

The current system that does not serve us or the planet is our linear economy, which goes one way—from the planet to the dump. We extract natural resources as if they are in infinite supply, turn them into products that are designed for convenience and disposability, and dump them into landfills and incinerators; at each stage of the process there is a cost to human health and the environment. This linear system is inherently unsustainable and responsible for 42% of our greenhouse gas emissions in the US, known as “consumption emissions.”

✓ A circular economy that mimics nature

As we rethink our systems, we need to look at systems that DO work. Nature is cyclical—there is no such thing as “waste.” Similarly, in a circular economy, we rethink how we use our natural resources, and redesign products to be less resource-intensive and less toxic. Rather than trashing used products, a circular economy captures “waste” to reintroduce it back into the economy as feedstock to manufacture new products over and over. Circularity looks beyond just taking less from the planet, but also focuses on how we can give BACK and regenerate it.

Eco-Cycle’s work to drive change toward circularity

Eco-Cycle is disrupting our wasteful linear system and bending it into a regenerative circular system. We are promoting policies, programs, and infrastructure that:



REDUCE extraction from the planet and implement REUSE

The best way to stop consumption-based emissions and the destruction of our natural resources is to STOP taking so much from the planet.

- ✗ OUT with the broken system of disposables by default.** We need to stop making and using disposable single-use packaging and products, particularly those made from fossil fuels that took millions of years to generate and are only used for mere minutes.



IN WITH CIRCULAR MODELS OF REDUCE AND REUSE:

- Eco-Cycle and partners championed the Plastic Pollution Reduction Act (PPRA) to begin to eliminate unnecessary disposables. The passage of PPRA makes Colorado the FIRST non-coastal state to implement a statewide fee on single-use checkout bags, progressing to a ban on plastic bags and polystyrene take-out containers in January 2024. We are exploring additional reduction policies to eliminate unnecessary waste.
- Disposables are not a “necessary evil.” Replacing them with durable items like reusable to-go containers and drink cups saves businesses and customers money, avoids significant GHG emissions, reduces water usage, and eliminates waste. Businesses that provide reuse services are on the rise, and Eco-Cycle is working to promote them and support the growth of reuse in Boulder County and beyond.



RECYCLE in a way that is authentic, accessible, affordable, and circular

- ✗ OUT with the broken system where waste is a norm.** For generations we’ve accepted waste as inevitable, and recycling and composting as the exception—wasting our finite natural resources.



IN WITH CIRCULARITY AND AUTHENTIC RECYCLING AS A CRITICAL COMPONENT OF A CIRCULAR ECONOMY:

- In 2022, Eco-Cycle worked with partners to make Colorado the third state to require producers of paper and packaging (cans, jars, boxes, etc.) sold in the state to take responsibility for the end-of-life of these materials by ensuring recycling services for all Coloradans. We are working now with all stakeholders to ensure the policy will be implemented to its full potential.



REGENERATE our soils

- ✗ OUT with the broken system of trashing our organic matter.** When we landfill organic materials like yard trimmings and food scraps, it generates methane, a greenhouse gas 84 times more powerful at trapping heat in the short term than CO₂.



IN WITH COMPOSTING AND REGENERATING OUR DEPLETED SOILS:

- When we turn our organic matter into compost and apply it to our landscapes and farms, we replenish our depleted soils, enabling them to grow healthier plants, retain more water, and actually DRAW DOWN emissions already in the atmosphere. Composting organics transforms a climate problem into a powerful natural climate solution! Eco-Cycle is working with local farmers to demonstrate a community-based Circular Compost System for Boulder County and beyond.

If we work within the natural rules of the planet, we can choose not only to survive but to thrive. Learn more about Eco-Cycle’s work to drive a circular economy and join us in creating a hopeful and regenerative future!

WANTED: BIG THINKERS. PROBLEM SOLVERS. ACTION TAKERS.



BECOME AN ECO-LEADER

Join a community of over 1,000 volunteers to advance local Zero Waste solutions:
Zero Waste Legislation • Carbon Farming • Natural Climate Solutions • Outreach & Trainings

eco-cycle[®]



*The Eco-Cycle Guide is funded in part
by the City of Boulder.*

Learn more and sign up at: ecocycle.org/volunteer

eco-cycle