



reduce



refuse



reuse



2022-2023 ECO-CYCLE
ZERO WASTE GUIDE



repair



recycle



regenerate



compost



eco-cycle®

Use this guide to learn how to work toward Zero Waste, and which local resources are available to help.

WHAT'S INSIDE?

WHY REDUCE	3
HOW TO REDUCE	4
WHY RECYCLE	5
WHAT TO RECYCLE: GUIDELINES	6
THE DIRTY DOZEN	8
WHY COMPOST	9
WHAT TO COMPOST: GUIDELINES	10
IS IT COMPOSTABLE?	11
WHY GO BEYOND THE BIN?	13
CENTER FOR HARD-TO-RECYCLE MATERIALS (CHaRM)	
GUIDELINES	14
HAZARDOUS MATERIALS: GUIDELINES	16
WHAT TO LANDFILL: GUIDELINES	18
ZERO WASTE FACILITIES & RESOURCES	19
RECYCLE ROW IN BOULDER	20
LONGMONT WASTE DIVERSION CENTER	21
ECO-CYCLE'S ZERO WASTE CLIMATE SOLUTIONS	22



Eco-Cycle is one of the oldest and largest nonprofit recyclers and Zero Waste organizations in the US. We innovate, implement, and advocate for local and global Zero Waste solutions to foster a more regenerative, equitable, and climate-resilient future.

Why REDUCE?

Reducing the “stuff” in our lives prevents the need to create a product in the first place, avoiding the resulting impact on our environment, climate, and people. It’s also the easiest step we can ALL take, regardless of what recycling or composting services exist in our community.



When we REDUCE, we:

1 REDUCE OUR CLIMATE IMPACT

More than 40% of our climate impact in the US comes from our stuff and our food—how we extract it from the planet, make it, transport it, use it, and throw it away. It’s called our “consumption emissions.”

The more we buy and throw away stuff, the more energy it takes to make new stuff, and the faster climate change accelerates.

Reducing our consumption of stuff saves energy, natural resources, and landfill space by cutting the demand to make, transport, and eventually bury these items.

2 REDUCE OUR IMPACT ON EARTH’S RESOURCES

If everyone in the world used resources the way we do in the US, we’d need five planets to keep up! Reducing unnecessary consumption lets us live within our one planet’s means.



3 PROTECT HABITATS, RIVERS, AND OCEANS

Not all disposable waste makes it to the landfill, and instead ends up polluting land, rivers, and oceans, where it can cause harm to people and animals.



4 REDUCE OUR DEPENDENCE ON WASTEFUL DISPOSABLES

In our convenience-oriented society, it’s common to pick up unnecessary waste like cups, straws, plastic utensils, bags, etc. These items are used for mere minutes, but producing them consumes energy, water, and natural resources, some of which took the Earth millions of years to create.



5 REDUCE WHAT WE SEND TO THE LANDFILL

Reducing our use of disposable products is a quick way to stop burying resources in landfills, since many disposables are not reusable, recyclable, or compostable.



How to REDUCE

As we go about our days, ordering take-out and making stops at coffee shops, it's easy to pick up unnecessary waste. These items may seem like innocent gestures of convenience, but each material has its own history of natural resource extraction, pollution, water consumption, and carbon impact. REFUSING single-use, wasteful products and REUSING durable, long-lasting items instead is key to living a Zero Waste lifestyle!

Here's our start-up guide for disposables to avoid and their reusable, durable alternatives.

AVOID

USE INSTEAD



PLASTIC BAGS

Americans dispose of more than 100 billion plastic bags every year, and only a fraction are ever recycled. Up to 100 MILLION barrels of oil are needed to make the world's plastic bags each year. Yet, typical usage of a plastic bag is just 20 minutes.

→ **Instead, stock up on reusable bags and totes.**



FOAM CUPS & CONTAINERS

Polystyrene foam, commonly called Styrofoam, contains styrene, a known carcinogen that can leach chemicals into food and drinks. Because polystyrene is so light, it can easily blow away and crumble into microplastics that pollute soil and water for centuries.

→ **Instead, bring your own cups for beverages and reusable containers to hold leftovers or take-out.**



PLASTIC WATER BOTTLES & PLASTIC-COATED PAPER COFFEE CUPS

Bottled water uses more than 17 million barrels of oil per year to produce, and is often just tap water sold at 10,000 times the price. An estimated 50 billion paper coffee cups are thrown away in the US every year; these paper cups are lined with plastic and are not typically recyclable.

→ **Instead, remember to bring your own water bottle and travel mug.**



PLASTIC UTENSILS & STRAWS

About 40 billion plastic utensils are used in the US each year for just a few minutes before they are discarded and sent to the landfill because they are not recyclable. Lightweight plastics like utensils and straws often end up in the environment, polluting

→ **Instead, carry your own set of reusable utensils with you.**



***Combine all the reusables listed on this page to create your own Zero Waste on-the-go kit!**

Why RECYCLE?

Recycling is a critical component of a more sustainable, circular economy and is crucial to maximizing natural resources, saving water and energy, creating local supply chains, and creating more resilient communities.



When we RECYCLE, we:

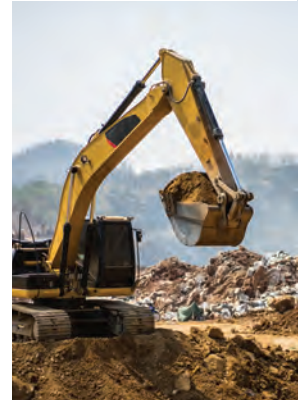
1 SAVE (A LOT) OF ENERGY

By adopting Zero Waste strategies, including recycling, we could reduce greenhouse gas emissions by more than 400 million metric tons of CO₂ per year, the equivalent of taking more than 20% of US coal-fired power plants off the grid.

Manufacturing products from recycled materials saves 30%–90% of the energy needed to manufacture these products from natural resources, and doesn't require additional extraction of trees, fossil fuels, or metal ores.

2 REDUCE EXTRACTION OF NEW NATURAL RESOURCES

Recycling extends the life span of materials, reducing pressure on finite natural resources. For example, aluminum cans and glass bottles can be recycled indefinitely! When we recycle these materials, it reduces the need to extract more bauxite ore or silica from the Earth.



3 SAVE WATER

Manufacturing from recycled materials saves water. For instance, producing paper from virgin pulp (from trees) creates the largest industrial demand for water per ton of product in the US. Recycling one ton of paper saves 7,000 gallons of water.



4 STOP BURYING VALUABLE RESOURCES

We bury or burn more than two-thirds of our waste every day in the US, destroying the value of these materials. Colorado throws away nearly \$265 million worth of recyclable material each year, such as aluminum, cardboard, paper, glass, and plastic.



5 CREATE MORE JOBS

Recycling creates an average of nine times more jobs than landfilling per ton. In the US, we could create 1.1 million new jobs by recycling 75% of our discards.





What to RECYCLE

using your single-stream curbside recycling bin

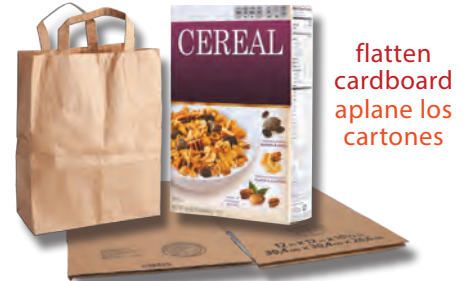


**Do not bag your recyclables—
place them loose in your
recycling bin**

PAPER AND CARDBOARD



PAPEL Y CARTÓN



flatten
cardboard
aplane los
cartones

CONTAINERS

EMPTY & RINSE, DO NOT FLATTEN



remove metal lids
vacíe

empty
vacíe

ENVASES

**VACÍE Y ENJUAGUE, NO LOS
APLANE**



PLASTIC BOTTLES, TUBS, JUGS, AND JARS

EMPTY & RINSE, DO NOT FLATTEN



attach plastic screw-top caps
fijar las tapas plásticas de
rosca

BOTELLAS, JARRAS, FRASCOS, RECIPIENTES PLÁSTICOS

VACÍE Y ENJUAGUE, NO LOS APLANE



only sturdy,
reusable
#2 and #5
"souvenir
cups"
sólo los
"vasos de
promoción"
#2 y #5 se
pueden
reciclar

When in doubt, give us a shout! 303.444.6634 / recycle@ecocycle.org

Si tiene alguna duda, comuníquese con nosotros!



eco-cycle®
Building Zero Waste Communities

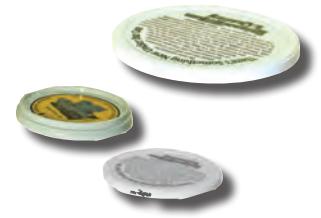
PLASTIC CLAMSHELLS, LIDS, AND TAKE-OUT CONTAINERS



berry containers and other plastic clamshell containers
(no foam/polystyrene; remove liner)
recipientes de frutos rojos y otros recipientes
de plástico (celdas de almeja)
(no espuma; retire el revestimiento)



take-out containers
(no food)
recipientes para llevar
(no alimentos)



plastic tub lids
tapas de
recipientes
plásticas

RIGID PLASTICS



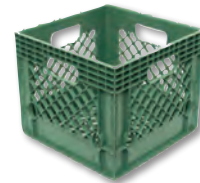
flower pots
macetas



hard plastic four-
and six-pack holders
porta bebidas
de cuatro y seis
unidades de plástico
duro



plastic lawn toys
(remove metal axles,
all materials MUST fit inside cart)
juguetes de plástico para el patio
(remover los ejes de metal, todo
el material DEBE caber dentro
del carro)



plastic crates
cajas plásticas



buckets, handles OK
baldes, se pueden
dejar las manijas

PLÁSTICOS RIGIDOS

NOT RECYCLABLE IN SINGLE-STREAM CURBSIDE RECYCLING BIN



food
comida



liquid
líquidos



plastic bags / film
bolsas / protectores
plásticos



recyclable items in plastic
bags / artículos reciclables
en bolsas de plástico



foam / polystyrene
espuma / poliestireno



lotion / toothpaste tubes
tubos de crema / pasta
dental



plastic-coated paper
papel recubierto de una
película de plástico



plastic cups
vasos plásticos



frozen food boxes
cajas de comida
congelada



latex gloves
guantes de látex



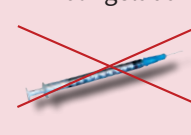
drinking glasses / ceramics
vasos de vidrio / cerámica



shredded paper
papel triturado



scrap metal
restos de metal



sharps / medical waste
objetos punzantes /
residuos médicos



explosive / hazardous
materials
materiales explosivos /
peligrosos



RECYCLING'S DIRTY DOZEN

CONTAMINATION IN RECYCLING BINS IS A HUGE PROBLEM. DO YOUR PART BY RECYCLING RIGHT! **BELOW ARE ITEMS TO KEEP OUT OF YOUR RECYCLING BIN.**

LA CONTAMINACIÓN DE LOS CONTENEDORES DE RECICLAJE ES UN GRAN PROBLEMA. ¡CONTRIBUYA RECICLANDO BIEN! **A CONTINUACIÓN SON ARTÍCULOS QUE NO DEBEN IR AL CONTENEDOR DE RECICLAJE.**

NO: INCORRECTLY PREPPED MATERIALS / MATERIALES PREPARADOS INCORRECTAMENTE

- 

1 **CONTAINERS WITH FOOD OR LIQUID RESIDUE / RECIPIENTES CON COMIDA Y LÍQUIDOS**
Please empty and rinse containers before putting them in the recycling bin.
- 

2 **RECYCLABLES IN PLASTIC BAGS / ARTÍCULOS RECICLABLES EN BOLSAS DE PLÁSTICO**
Place your recyclables loose in your recycling bin.

INSTEAD: Don't flatten containers. Empty and rinse containers before recycling. **AL CONTRARIO:** No aplane los recipientes. Vacíe y enjuague los recipientes antes de reciclar.

NO: COMPOSTABLES / COMPOSTABLES

- 

3 **FOOD AND LIQUIDS / COMIDA Y LÍQUIDOS**
Please empty and rinse containers before putting them in the recycling bin.
- 

4 **LOW-GRADE PAPERS, INCLUDING NAPKINS & PAPER TOWELS / PAPELES DE BAJO GRADO. INCLUYENDO SERVILLETAS Y TOALLAS DE PAPEL.**

INSTEAD: Compost food scraps (see composting guidelines on page 10). **AL CONTRARIO:** Composte las sobras de comida (vea las pautas de compostar en la página 10).

NO: HARD-TO-RECYCLE MATERIALS / MATERIALES DIFÍCILES DE RECICLAR

- 

5 **PLASTIC BAGS / BOLSAS PLÁSTICAS** (binds up sorting equipment)
- 

6 **SCRAP METAL / DESECHOS DE METAL** (damages equipment)
- 

7 **DRINKING GLASSES / VASOS DE VIDRIO** (not the same melting temperature as recyclable glass)

INSTEAD: Recycle these items at the CHaRM (see guidelines on page 14). **AL CONTRARIO:** Recicle estos artículos en CHaRM (vea las pautas de CHaRM en la página 14).

NO: LANDFILL ITEMS / ARTÍCULOS DE LA BASURA


- 


8 **NONRECYCLABLE PLASTICS / PLÁSTICOS NO RECICLABLES** (no stable markets exist for these items)
- 


9 **FROZEN FOOD BOXES OR ICE CREAM CONTAINERS / EMPAQUES DE COMIDA CONGELADA O RECIPIENTES DE HELADO** (their plastic coatings render them non-recyclable)

INSTEAD: Put these items in the trash (see guidelines on page 18). **AL CONTRARIO:** Coloque estos artículos en la basura (vea las pautas de basura en la página 18).

NO: HAZARDOUS MATERIALS / MATERIALES PELIGROSOS

- 

10 **MOTOR OIL OR SOLVENTS / ACEITE PARA MOTOR O SOLVENTES**
- 

11 **SYRINGES, NEEDLES, AND SHARPS / JERINGAS, AGUJAS, PRODUCTOS SANITARIOS CORTANTES**
- 

12 **CFL LIGHT BULBS / LAMPARAS COMPACTAS FLUORESCENTES** can be recycled at specialty facilities; put LED lightbulbs in the trash

INSTEAD: Take these items to the Hazardous Materials Management Facility (see guidelines on page 16). **AL CONTRARIO:** Lleve estos artículos al Centro de Manejo de Materiales Peligrosos (HMMF, por sus siglas en inglés; vea las pautas en la página 16).

Why COMPOST?

Most of us know composting is a way to turn our organic waste into a valuable soil amendment, but it's also a powerful climate-change-fighting tool!



When we **COMPOST**, we:

1 STOP THE RELEASE OF METHANE, A POTENT GREENHOUSE GAS

A common misconception is that yard waste, food scraps, and other organic waste will simply rot in the landfill and eventually “go away.” This is not the case. Landfills are tightly packed tombs of trash that shut out oxygen and sunlight. Organic waste decomposes slowly in these anaerobic conditions, which produces methane.

Methane is a powerful greenhouse gas. It traps 84 times more heat in our atmosphere than carbon dioxide over the short term and is a major contributor to climate change impacts. Landfills attempt to mitigate these emissions, but composting prevents them altogether.

2 SUPPORT A NATURAL CLIMATE SOLUTION

When we compost our biodegradable materials and then apply that compost to soils, we create a carbon “sink” by increasing the soil’s ability to pull carbon from the atmosphere and store it safely in the ground. Soil has the capacity to store three times more carbon than trees.



3 CREATE HEALTHIER SOILS AND FOOD

Compost helps improve all soil types, including clay soils that are common throughout Colorado. Compost enriches soil and helps it retain nutrients that produce healthier, more nutrient-dense food.



4 REDUCE WATER USE

Just as compost helps soil retain nutrients, it also helps soil retain water by increasing its absorbency—a 5% increase in organic material quadruples soil’s water-holding capacity.



5 REDUCE WATER POLLUTION

Compost helps increase food productivity naturally, reducing the need for fertilizers and pesticides that often pollute rivers and water sources.





COMPOST

NEW
NUEVO

FOOD SCRAPS / *DESPERDICIOS DE COMIDA*

Remove stickers, twist ties, rubber bands, and packaging.

Sin etiquetas, alambres de plástico, ligas, o empaquetado.



Coffee grounds and beans
(no filters)

*Café molido y en grano
(sin filtros)*



NO COMPOST BAGS

Small countertop compost bags
(3 gallons) accepted

NO BOLSAS DE COMPOST

Se aceptan bolsas de compost
chicas (3 galones)

YARD & PLANT TRIMMINGS / *RECORTES DE JARDÍN Y PLANTAS*



Flower bouquets
no string or elastic bands

Ramo de flores: no cuerdas o bandas



NO PAPER YARD BAGS

**NO BOLSAS DE PAPEL PARA
CORTES DE SU JARDIN**

THESE ITEMS ARE NO LONGER ACCEPTED IN COMPOST. PUT THESE ITEMS IN THE TRASH.
ESTOS ARTICULOS YA NO SE ACEPTAN EN COMPOST. PONGA ESTOS ARTICULOS EN LA BASURA.

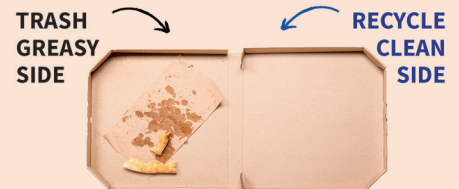


NO FOOD SERVICE WARE
including products labeled as
compostable

NO UTENSILIOS DE COMIDA
*incluyendo productos etiquetados
como compostables*



NO PAPER PRODUCTS
NO PRODUCTOS DE PAPEL



NO GREASY PIZZA BOXES
Trash greasy side and
recycle clean side.

NO CAJAS DE PIZZA GRASOSAS
Ponga la mitad grasosa en la basura
y la mitad limpia en el reciclaje.



Learn why compost guidelines have changed / Descubra por qué han cambiado las guías de compost

When in doubt, give us a shout! 303.444.6634 / recycle@ecocycle.org
Si tiene alguna duda, comuníquese con nosotros!

eco-cycle®

IS IT RECYCLABLE?

there's an app for that!

Introducing the Eco-Cycle

A-Z RECYCLING GUIDE APP!



TEST YOUR RECYCLING KNOWLEDGE!



You can also test your recycling knowledge by playing the **Eco-Cycle Sorting Game**.

Visit ecocycle.org to play!

How many times have you stood at a recycling bin with an item in hand and wondered, “Can I recycle this?” Well, we have an app for that!

Eco-Cycle’s tool helps people living and working in Boulder County know what to do with hundreds of discarded items—everything from appliances and apple cores to zippers and zip drives.

Find out in seconds if an item is recyclable, compostable, reusable, or trash!

Download it from the Apple App Store or Google Play and search for “Eco-Cycle A-Z”.

Why GO BEYOND THE BIN?

There's more to recycling than what you can put in your curbside bin. Bring your hard-to-recycle items to the CHaRM!

All Boulder County residents and businesses have access to a first-of-its-kind facility that does not exist in most US communities. It's the Eco-Cycle/City of Boulder Center for Hard-to-Recycle Materials, affectionately called the CHaRM, where many items that you can't recycle in your curbside bin are accepted.



When utilizing the CHaRM, we:

1 GIVE NEW LIFE TO MATERIALS THAT TYPICALLY GET TRASHED

The common products and packaging accepted at the CHaRM are challenging to recycle for many reasons: they do not have enough inherent value to be recycled at a profit, contain multiple materials that cannot be separated and responsibly recycled at a profit, are toxic to handle and require special procedures, and/or have strict collection guidelines that don't mix with curbside recycling systems. That's why there is a fee associated with most of the products accepted—Eco-Cycle and the City of Boulder are actually paying to have these items processed.

2 RECYCLE ELECTRONICS TO THE HIGHEST STANDARDS

It is illegal to throw electronics in the trash in Colorado because of the hazardous toxins found in them. You can recycle your electronics at the CHaRM knowing they are recycled following the world's most rigorous environmental and social justice criteria.



3 CREATE JOBS FOR PEOPLE WITH disAbilities

Thanks to a partnership with Blue Star Recyclers, when you recycle your electronics at the CHaRM, you also create recycling jobs for people with disAbilities.



4 GIVE RECOVERING INDIVIDUALS A NEW LEASE ON LIFE

Through Eco-Cycle's partnership with Spring Back Colorado, every time you drop off your old mattress or box spring at the CHaRM, you support employment opportunities for Coloradans rebuilding their lives.



5 SUPPORT SCHOOLS AND LOCAL ORGANIZATIONS

Bring your used children's books to the CHaRM, and help us redistribute approximately 50,000 books each year to 27 local and international organizations including shelters, clinics, and schools.



How to RECYCLE AT THE CHaRM

eco-cycle® & CITY OF BOULDER CENTER FOR HARD-TO-RECYCLE MATERIALS

6400 Arapahoe Rd., Boulder • Open Mon–Sat, 9am–5pm (closed Sundays) • ecocycle.org/charm

THE ITEMS LISTED ARE ACCEPTED AT THE CHaRM ONLY • DO NOT PUT THEM IN CURBSIDE BINS

ELECTRONICS



TVs, VCRs & DVD Players,
Satellite Boxes



Video Game Systems



Printer/Copy Machines, Fax Machines,
Printers & Printer Cartridges



Mobile Phones, Office
Phones, Home Phones



Laptops, Computers &
Monitors



Tablets & Cameras

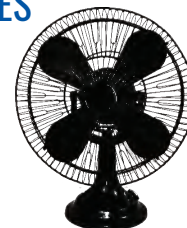


Computer Accessories,
Keyboards, Mice, Cables



Audio Equipment

SMALL APPLIANCES: WILL USUALLY HAVE CORDS OR INTERNAL BATTERIES



NO: vacuum bags, glass (coffee pots, blender carafes, etc.), or food/liquid residue

Check website for current rates: ecocycle.org/charm. Prices subject to change.

Have metal appliances? See Scrap Metal listing.

HARD-TO-RECYCLE PLASTICS: MUST BE CLEAN, DRY & EMPTY



Plastic Bags



Plastic Bubble Wrap



Foam Packing Sheets



Newspaper Bags



Ziploc Bags

NO moisture, receipts, food waste in bags, biodegradable plastic, tape, or packing peanuts

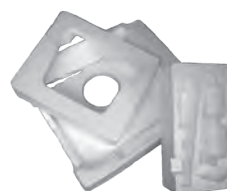
Check website for current rates: ecocycle.org/charm. Prices subject to change.

BIG DURABLE PLASTICS: MARKED WITH A #2 OR #5



NO: flower pots without a #2, inflatable pools or other inflatable plastics, water beds, chew toys, CD jewel cases, small toys such as action figures, plastic clothes hangers, etc.

#6 WHITE BLOCK FOAM



White Block Foam Packaging
(aka Styrofoam®)
may be marked #6

NO: packing peanuts, polystyrene (aka Styrofoam®) cups/to-go boxes, moisture, or tape.

SCRAP METAL: ITEMS THAT ARE AT LEAST 50% METAL, INCLUDING APPLIANCES



NO: propane tanks or canisters of any kind. Have a tank or canister? Visit ecocycle.org for details.

REMOVE fuel caps and lids; safely **DRAIN** all liquids, including gasoline and oil, which can be taken to the Household Hazardous Materials Management Facility.

MISCELLANEOUS



Bikes, Parts, Tires & Inner Tubes

NO other accessories or sporting goods



Books & Manuals

(Computer & office manuals, hard-bound and paperback books)



Concrete

(Accepted in small quantities of less than a small pick-up truck bed.)

NO metal or rocks; clean and free of aggregate



Vegetable-Based Cooking Oil

NO motor oil or any oil used for purposes other than cooking



Fire Extinguishers

All sizes and conditions accepted.



Mattresses & Box Springs

- Standard spring, memory foam, or futon mattresses.
- Box springs of any size.
- Mechanical beds.
- 100% foam mattress toppers.

We cannot accept bed bug-infested mattresses or box springs at the CHaRM. NO mattresses or box springs with mold.



Porcelain Toilets, Sinks & Urinals

Please note that the cost to recycle an intact unit is substantially higher than for units that already have all non-porcelain parts removed—see website for current fees. Porcelain must be clean.

NO biohazards.



Reusable Shoes & Textiles

- Paired, reusable shoes (no mud).
- Clothing, sheets, blankets, towels, and fabrics.
- Items may be stained or ripped, but must be clean.

NO bathing suits, socks, underwear, rugs, carpet, curtains, or pillows.



NEW MATERIALS ACCEPTED AT THE CHaRM



Drinkware and Glass Plates, Bowls, Vases, etc.

No ceramics or oven-safe glass (for example, Pyrex cookware or containers).



Solar Panels
Commercial or household panels accepted.

OTHER MATERIALS

PAPER SHREDDING

- Paper materials only

NO plastic binders, steel binder clips, or already shredded paper.

SINGLE-STREAM RECYCLING

- See guidelines on page 6

COMPOSTABLES

- Visit ecocycle.org/charm for current fees
- See guidelines on page 10

HAZARDOUS MATERIALS

MATERIALES PELIGROSOS

Please take these materials to the **Boulder County Hazardous Materials Management Facility (HMMF)**. Residential appointments are recommended at boco.org/HMMFappointment. The HMMF accepts hazardous materials from businesses by appointment only at boco.org/HMMFbizappt.
Note: These items are not accepted at the Eco-Cycle Center for Hard-to-Recycle Materials (CHaRM) located at 6400 Arapahoe Road, Boulder.

HAZARDOUS LIQUIDS / LÍQUIDOS PELIGROSOS



Cleaning solvents
Solventes de limpieza



Antifreeze
Anticongelante



Motor oil
Aceite para motores



Bleach
Detergente líquido
blanqueador



Gasoline
Gasolina

HOUSEHOLD HAZARDOUS ITEMS / ARTÍCULOS PELIGROSOS PARA EL HOGAR

Light bulbs: Fluorescent, CFL, grow lights

Bombillas: Fluorescentes, CFL, luces de crecimiento para



No LED, halogen, or incandescent lightbulbs
No se aceptan bombillas LED, halógeno, or Incandescentes



Spray paint
Pintura en aerosol



Paint
Pintura



Stain
Tinte de color



Fertilizer
Fertilizador



Weed spray
Fumigador de maleza



Plant food
Comida para plantas



Pool cleaner
Limpiador de piscinas



In approved sharps container only

Solo en recipientes aprobados para productos cortantes

Syringes, needles, and sharps
Jeringas, agujas, productos sanitarios cortantes

Hazardous Materials Management Facility
720.564.2251 • 1901c 63rd St., Boulder, CO 80301



BATTERIES / BATERIAS



Tape lithium batteries

VAPING ACCESSORIES / ACCESORIOS DE VAPEO



CYLINDER PROPANE TANKS / CILINDROS DE PROPANO



**Propane cylinders
1 lb. and under only**

Solo cilindros de propano de 1 lb. o menos

These materials should be disposed of in the **TRASH**, *not* the Hazardous Materials Management Facility.

*Estos materiales van a la **BASURA**, no al Centro de Manejo de Materiales Peligrosos.*

PUT THESE ITEMS IN THE TRASH:



Incandescent
Bombillas incandescentes



LED
Bombillas LED



Smoke & carbon monoxide detector
Detectores de humo y monóxido de carbono



Grout
Selladores



Paint brushes
Brochas para pintar



Used plastic paint cans
Tarros plásticos de pintura usados



Hazardous Materials Management Facility

1901c 63rd St., Boulder, CO 80301

*Located behind, west, of the Boulder County Recycling Center/
Ubicado al oeste, del Centro de Reciclaje del Condado de Boulder*

**Business waste appointments on Tuesdays/Citas para desechos comerciales los martes. Residential waste on Wed-Sat, 8:30 a.m.-4 p.m.
Residuos residenciales de miércoles a sábado, de 8:30 a.m. a 4 p.m.**



What to LANDFILL



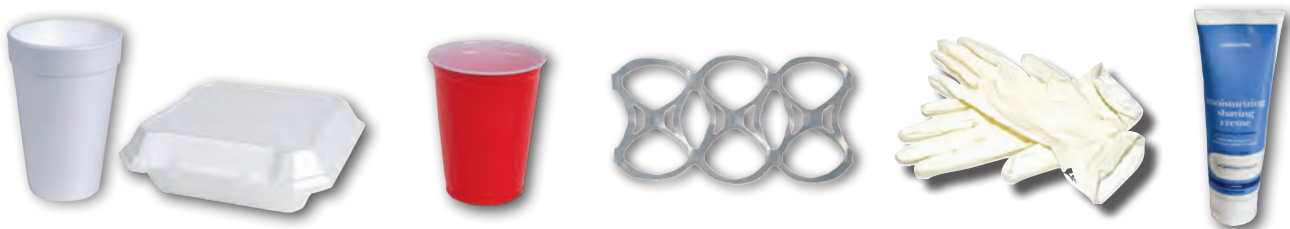
PLASTIC-COATED PAPER

PRODUCTOS DE PAPEL CON RECUBRIMIENTO PLASTICO



NONRECYCLABLE PLASTICS

PLÁSTICOS QUE NO SON RECICLABLES



WRAPPERS & FROZEN FOOD PACKAGING

ENVOLTURAS Y EMPAQUES DE COMIDA CONGELADA



PLEASE ALSO TRASH: FEMININE PRODUCTS, DIAPERS, ANIMAL WASTE & OTHER BIOHAZARDS

POR FAVOR COLOQUE TAMBIEN EN LA BASURA: PRODUCTOS DE HIGIENE FEMENINA, PAÑALES,
EXCREMENTO ANIMAL Y OTRAS SUSTANCIAS CON RIESGO BIOLÓGICO

When in doubt, give us a shout! 303.444.6634 / recycle@ecocycle.org

¡Si tiene alguna duda, comuníquese con nosotros!

eco-cycle®
Building Zero Waste Communities

Where to find ZERO WASTE FACILITIES & RESOURCES

ALLENSPARK

Allenspark Transfer Station and Recycling Drop-off

Accepts bagged and loose garbage from households and small businesses for a fee. Single-stream recycling, textile recycling, and scrap metal recycling are accepted free of charge. No slash is accepted at this facility.

Location: 14857 State Highway 7

Hours: Mon, Wed, Fri, Sat, Sun, 10–4; closed Tues & Thurs

Phone: 303.747.2107

bouldercounty.org/environment/trash/allenspark-transfer-and-recycle

Meeker Park Forestry Sort Yard

Accepts logs, slash, timber, pine cones, needles, and leaves for drop-off.

Open mid-May to mid-October

Location: 8200 State Highway 7

Hours: Wed–Sat, 9–5

Phone: 303.678.6368

bouldercounty.org/property-and-land/forest-health/community-forestry-sort-yards

BOULDER

Available to all Boulder County residents

Art Parts Creative Reuse Center

Accepts and sells gently used art supplies.

Location: 3080 Valmont Rd.

Hours: Mon–Sat, 10–6; closed Sundays

Phone: 720.379.5328

artpartsboulder.org

Boulder County/City of Boulder Yard & Wood Waste Drop-off Center at Western Disposal

The City of Boulder and Boulder County sponsor the yard waste drop-off center and wood waste drop-off center at Western Disposal. Residents receive a 40% discount from normal yard and wood waste drop-off pricing. Keep yard waste separate from wood waste. Boulder County contractors bringing material from construction sites within Boulder city limits pay 30% less than the standard construction trash disposal rate if wood waste is kept separate.

Location: 2051 63rd Street

Hours: Mon–Sat, 7–5; closed Sundays

Phone: 303.444.5794

westerndisposal.com/trash-recycle-center/wood-yard-waste

Boulder County Hazardous Materials Management Facility

Drop-off and reuse for hazardous materials such as paint and household cleaners. For residents of Boulder County, City and County of Broomfield, and Town of Erie. Proof of residency will be checked upon entry.

Location: 1901 63rd St. (west of the Boulder County Recycling Center)

Hours: Wed–Sat, 8:30–4; closed Sun, Mon, Tues

Phone: 720.564.2251

bouldercounty.org/environment/hazardous-waste/management-facility

Boulder County Recycling Center & Drop-off Center

See pages 6–7 for materials accepted.

Location: 1901 63rd St.

Hours: Drop-off open 24 hours

Phone: 303.444.6634; 720.564.2220

bouldercounty.org/environment/recycle/recycling-center

Eco-Cycle/City of Boulder CHaRM: Center for Hard-to-Recycle Materials

Accepts hard-to-recycle materials and scrap metal for recycling. See pages 14–15 for details.

Location: 6400 Arapahoe Rd. (co-located with Resource Central)

Hours: Mon–Sat 9–5; closed Sun

Phone: 303.444.6634

ecocycle.org/charm

Resource Central: Material Reuse Facility

Accepts and sells new and used building materials in good shape.

Location: 6400 Arapahoe Rd. (co-located with Eco-Cycle CHaRM)

Hours: Mon–Sat, 9–5; closed Sun

Phone: 303.419.5418

resourcecentral.org/reuse

Resource Central: Tool Library

Provides affordable tool-lending services to individuals, businesses, and civic or community organizations.

Location: 6400 Arapahoe Rd. (co-located with Eco-Cycle CHaRM)

Hours: Mon–Sat, 9–5; closed Sun

Phone: 303.419.5418

tools.resourcecentral.org

ERIE

Erie Recycling Center

Accepts single-stream recycling for drop-off.

Location: 1000 Briggs St. (next to Public Works building)

Hours: Daily, 8–4 (weather permitting)

Phone: 303.926.2880

erieco.gov/282/Erie-Recycling-Center

LONGMONT

Longmont Waste Diversion Center

Please be sure to bring a current City of Longmont utility bill and identification to show that you are a city resident paying the waste management fee. See details of everything accepted on page 21.

Location: 140 Martin St.

Hours: Mon–Sat, 8–4; closed Sundays

Phone: 303.651.8416

longmontcolorado.gov/wasteservices

LOUISVILLE

Louisville Branch Recycling Site

Proof of Louisville residency will be checked at the gate by city staff. This site only accepts wood and plant material such as tree and shrub debris.

Open every weekend from 8–4 pm between Oct. 2–Nov. 7

Location: North side of cemetery on Hwy 42 & Empire Rd.

Phone: 303.335.4733

louisvilleco.gov/local-government/government/departments/public-works/leaf-branch-drop-off-collection

Louisville Leaf Drop-off Site: Louisville Sports Complex

Only leaves and grass clippings are accepted at the drop-off containers; no trash, branches, or plastic garbage bags. Proof of residency will be checked upon entry.

Location: 1200 Courtesy Rd.

Hours: Seasonal; 7:30–3

Phone: 303.335.4750

louisvilleco.gov/local-government/government/departments/public-works/leaf-branch-drop-off-collection

LYONS

Lyons Recycling Drop-off Center

Accepts single-stream recycling.

Location: 198 2nd Ave. (south side of lot)

Hours: Open 7–7

Phone: 720.564.2757

townoflyons.com/369/Sustainability-Resources-Waste

NEDERLAND

Nederland Forestry Sort Yard

Accepts logs, slash, timber, pine cones, needles, and leaves for drop-off. **Open April 28–October 23**

Location: 291 Ridge Rd.

Hours: Wed–Sat, 9–5

Phone: 303.678.6368

bouldercounty.org/property-and-land/forest-health/community-forestry-sort-yards

Nederland Transfer Station and Recycling Drop-off Center

Accepts single-stream recycling, scrap metal recycling, and textile recycling free of charge. Trash and compostables accepted for a fee. No slash is accepted at this facility.

Location: 286 Ridge Rd.

Hours: Mon, Tues, Thurs, Fri, Sat, Sun 8–4; closed Wed

Phone: 303.258.7878

bouldercounty.org/environment/trash/nederland-transfer-and-recycle

NIWOT

Niwot Recycling Drop-off Center

Accepts single-stream recycling.

Location: Niwot Loop Trailhead (north of Hwy 52 on N. 79th St.)

Hours: Open dawn to dusk

Phone: 720.564.2220

bouldercounty.org/environment/recycle/drop-off-centers/

SUPERIOR

Superior yard waste recycling facility

Yard waste site for RESIDENTS ONLY (not for commercial use). Bring ID or some form of resident identification when dropping items off.

Location: 2125 Honey Creek Ln.

Hours: Wed, 2–5; Sat–Sun, 8–12 & 1–5

Phone: 303.499.3675

superiorcolorado.gov/departments/parks-recreation-open-space/superior-yard-waste-site

Don't see your item listed? Check out the Eco-Cycle A–Z Recycling Guide

OTHER RESOURCES

Learn how and where to recycle 400+ items in Boulder County and the Denver Metro area.

ecocycle.org

Download the Eco-Cycle A–Z Recycling Guide App! Available online at ecocycle.org and anywhere you download apps.

City of Boulder via Inquire Boulder

See a business that needs help complying with the Universal Zero Waste Ordinance? Use Inquire Boulder to report businesses, homes, HOAs, and apartment and condo complexes without recycling, compost, or trash service.

<https://user.govoutreach.com/boulder/faq.php?cmd=shell>

CU-Boulder Environmental Center

Offers a wide range of sustainability services and ways to get involved.

colorado.edu/ecenter

U-Fix-It Clinics, sponsored by Eco-Cycle

Free hands-on repair clinics for electronics, toys, appliances, etc.

ecocycle.org/ufixit

BUSINESS RESOURCES

City of Boulder's "Zero Waste Boulder" Website

Extensive Universal Zero Waste Ordinance toolkits and resources.

zerowasteboulder.com

Eco-Cycle CHaRM-on-the-Road Service

Commercial hauling for hard-to-recycle items; see pages 14–15 for a list of accepted items.

ecocycle.org/businesses

EnergySmart

For residential energy and water conservation services.

energysmartyes.com

PACE: Partners for a Clean Environment

Extensive free energy and water conservation tools and services for businesses.

pacepartners.com

Resource Central

Consultations, tools, and services for water and energy conservation; includes resources for residents.

resourcecentral.org

RESIDENTIAL RECYCLING & COMPOSTING CURBSIDE SERVICES IN BOULDER COUNTY

Boulder

All trash haulers are required to provide curbside compost and recycling. Contact local hauler for prices.

Erie

Trash and recycling haulers operating in the Town of Erie offer various levels of recycling services and options. Contact your hauler directly.

Lafayette

The City of Lafayette contracts with Republic Services for residential composting and recycling. For service information, contact Republic Services at 303.286.2400.

Longmont

The City of Longmont provides recycling, composting, and trash curbside collection for residents. For service information, contact the City of Longmont at 303.651.8416.

Louisville

The City of Louisville contracts with Western Disposal to provide recycling, composting, and trash curbside collection for residents. For service information, contact Western Disposal at 303.444.2037.

Lyons

Trash and recycling haulers operating in the Town of Lyons offer various levels of recycling services and options. Contact your hauler directly.

Superior

For residents of Original Town, Coal Creek Crossing, Downtown Superior, Sagamore, Calmante, and The Ridge: Contact Town Hall with questions about trash, recycling, and seasonal compost curbside collection at 303.499.3675.

For residents of Rock Creek Ranch and The Summit at Rock Creek Townhomes: contact Cherry Creek HOA Professionals at 303-693-2118. For questions relating to curbside compost services, contact Waste Connections at 303.288.2100.

No matter where you live, be sure to ask your hauler about saving money by reducing the size of your trash cart!

RECYCLE ROW IN BOULDER

The City of Boulder is going for Zero Waste!

Visit zerowasteboulder.com for more info.

Facilities to help you practice Zero Waste



- 1 Resource Central**
Accepts and sells new and used building materials in good shape.
6400 Arapahoe Rd. (co-located with Eco-Cycle CHaRM)
Mon-Sat, 9-5; closed Sundays | resourcecentral.org/reuse | 303.419.5418
- 2 Eco-Cycle/City of Boulder CHaRM: Center for Hard-to-Recycle Materials**
Accepts hard-to-recycle materials and scrap metal for recycling. See pp. 14-15 for details.
6400 Arapahoe Rd. (co-located with Resource Central)
Mon-Sat 9-5; closed Sundays | ecocycle.org/charm | 303.444.6634
- 3 Boulder County Recycling Center & Boulder Drop-off Center**
See page 6 for materials accepted. Shredded paper also accepted separately.
1901 63rd St. | Drop-off open 24 hours | 720.564.2220 • 303.444.6634
- 4 Boulder County Hazardous Materials Management Facility**
Drop-off and reuse for hazardous materials such as paint and solvents.
1901 63rd St., west of (behind) Boulder County Recycling Center
Wed-Sat, 8:30-4 | bouldercounty.org/environment/hazardous-waste/management-facility | 720.564.2251
- 5 Western Disposal**
Accepts landfill waste, organics, construction & demolition (C&D) waste, and yard & wood waste for drop-off
City of Boulder residents can drop off yard waste at no charge.
2051 63rd St.
Mon-Sat, 7-5; closed Sundays | www.westerndisposal.com | 303.444.5794

LONGMONT WASTE DIVERSION CENTER

140 Martin St. 303.651.8416 | longmontcolorado.gov | Preguntas? Llame a 303.243.5820

Hours vary. Visit website for details. **Please check in at the window and bring a current utility bill indicating the Waste Management Fee.**



Single-stream recycling—accepted 24/7. See pages 6-7 for guidelines.

ACCEPTED DURING STAFFED HOURS ONLY:

Automotive and Rechargeable Batteries: Includes motorcycle and boat batteries. **NO alkaline batteries.**

Compostables Drop-Off: See page 10 for guidelines.

Cooking Oil: Must be in see-through plastic containers (gallon milk jugs or the original plastic containers or box cooking oil comes in).

Motor Oil & Antifreeze: Must be in separate see-through one-gallon containers (gallon milk jugs work best). Must also be securely capped and cannot be contaminated with other fluids. **Other chemicals (paint, solvents, etc.) are not accepted at this site.**

Plastic Bags: Includes plastic shopping and newspaper bags. Must be clean, dry, and empty. **NO moisture, receipts, or food waste inside bags, biodegradable plastic, tape, packing peanuts, or foam wrap.**

Scrap Metal: All types of scrap metal. **NO fencing, pressurized containers, electronics, appliances containing Freon®.**

Shredded Paper: See bin marked “shredded paper.” **NO bagged material.**

#6 White Block Foam: Must be #6 white block foam packaging and rigid foam insulation only. **NO packing peanuts, Styro-foam® cups or “to-go” boxes, moisture, or tape.**

Yard Waste: Tree limbs, branches, bushes, and un-bagged leaves. Non-residents

and contractors will be charged a fee.

NO trash, plastic bags, lumber, sod, dirt, rock, or split rail fence material will be accepted.

Free self-service mulch is also available at the Longmont Waste Diversion Center.

Call for more information about the City of Longmont's:

- Paper shredding events
- Hard-to-recycle collection events for CHaRM items
- Large bulky items collection
- Household hazardous chemical drop-off days and yard waste collection events.

Eco-Cycle's Unique Role in Working Toward a Sustainable Climate Future

Eco-Cycle Focuses on Four Climate Solutions

The latest report from the International Panel on Climate Change implores us not to miss “a brief and rapidly closing window of opportunity to secure a livable and sustainable future for all.” The report emphasizes that scientific evidence unequivocally demonstrates that climate change “is a threat to human well-being and planetary health”—a conclusion underscored by our experiences right here in Colorado of wildfires, lingering droughts and extreme weather events. Eco-Cycle is heeding that call. While focus on reducing climate emissions has historically been on tailpipes and smokestacks, we now know that more than 40% of our climate impact in the US comes from “consumption emissions”—our stuff and our food, and how we extract it from the planet, make it, haul it, use it, and throw it away.

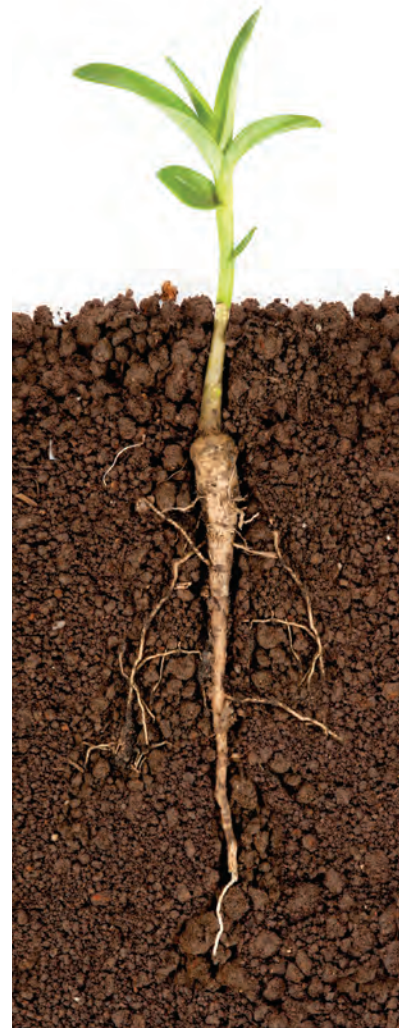
Leveraging our unique role as one of the leading Zero Waste organizations in the country, we are working to make the biggest difference possible by challenging the status quo production systems that promote over-consumption, waste, and inequities. We are aligning our resources and efforts to work on what we have determined are the FOUR most significant ways we can positively impact our climate and our planetary future:

1 Draw Emissions BACK DOWN with Compost, Carbon Farming and Other Nature-Based Climate Solutions

To succeed in keeping our emissions below the critical 2 degrees Celsius threshold, we must go BEYOND reducing emissions to actively removing carbon from the atmosphere. Research suggests that carbon farming may be our best hope to draw down atmospheric carbon dioxide and store carbon safely and beneficially in our soils.

In carbon farming, regenerative agricultural practices—such as no-tilling, applying compost, and growing cover crops—are implemented to restore living soil ecosystems, enhance photosynthesis, and increase the soil's natural ability to store carbon. Compost—made from organic discards of food and yard waste, which make up to 40% of our waste stream—contains beneficial microbes that help drive soil regeneration. By enhancing these natural processes, carbon farming helps the Earth to heal itself, while also providing us with healthier food and more drought-resistant landscapes.

Eco-Cycle is working on both agricultural and urban lands to demonstrate composting and carbon farming as an important climate solution by developing a comprehensive Circular Community Compost System in Boulder County to serve as a model, and by fostering elements of a statewide compost system across Colorado. We are partnering with local regenerative farmers to create on-farm compost demonstrations that make and use finished compost. Through our growing Eco-Leader program, we are engaging the public in carbon farming in their own backyards and to grow more robust urban tree canopies and pollinator corridors to support climate cooling and resiliency.



2 Prevent Emissions by Reducing Plastic Consumption

Plastics contribute to climate change throughout their entire life cycle—from fossil fuel fracking and extraction of virgin resources, to production at chemical processing plants that emit air pollution, to their disposal in landfills, incinerators, or as litter in the environment. Only 9% of all the plastics ever made have been recycled, and many plastics are not recyclable at all.

Yet, plastic production is expected to double in the next 20 years and nearly quadruple by 2050. Much of that impact is due to the plastic industry's promotion of single-use disposable plastics. The answer isn't to rely on recycling, but to insist on reduced production. Eco-Cycle is working to reduce plastics consumption by helping to pass state legislation like Colorado's recent "Plastic Pollution Reduction Act" to ban disposable plastics like straws, bags, and polystyrene foam take-out containers. We are also helping industry sectors rethink and redesign their products to minimize wasteful plastics, and spurring national action through our participation in the U.S. Plastics Pact.



3 Create a Zero Waste Colorado

Our beautiful state continues to be one of the most wasteful in the country—stuck at a recycling and composting rate of only 15%, far behind the national average of 35%. But we are going to change that!

We are putting Colorado on the path to a circular economy where discards are transformed into new products or composted into nutrient-rich soil, and green local jobs are created. In the past few years, Eco-Cycle has helped draft and pass state legislation to: establish the Front Range Waste Diversion grant program to help communities pursue Zero Waste practices and infrastructure, reduce single-use disposable plastics, and to envision a statewide Circular Economy Center to develop end markets for recyclable materials. Eco-Cycle is now promoting Producer Responsibility as a way to transform our current recycling system, by having consumer brands pay to recycle their containers, paper, and packaging rather than residents and local governments.

Eco-Cycle also works directly with cities across Colorado, sharing best practices learned in Boulder County to help them adopt local ordinances, programs, and infrastructure to create Zero Waste communities.

4 Make Boulder County Communities a Model for the Nation

The world needs successful models to emulate, and Eco-Cycle will continue to work with our local Boulder County partners to create community-based Zero Waste models for governments, schools, community events, businesses, and neighborhoods. We will continue to:

- Operate the Boulder County Recycling Center in the exemplary fashion that has made it stand out as a success story of profitable mission-driven recycling.
- Expand opportunities at the CHaRM for Boulder County residents and businesses to recycle more types of materials than any other community.
- Advance a Circular Community Compost System for Boulder County.
- Educate and engage our community through our award-winning schools, community education, and Eco-Leader engagement programs.
- Work with commercial sectors—such as the brewing industry and outdoor retailers—to craft sector-wide solutions to advance Zero Waste procurement and recycling practices.



Building Zero Waste Communities

P.O.Box 19006

Boulder, CO 80308

Non-Profit Org.

US Postage

PAID

Permit No. 229

Boulder, CO

CHANGE OF SERVICE REQUESTED

Printed on 30% post-consumer recycled paper.



Support for printing this guide provided
by City of Boulder Trash Tax dollars.

WANTED: BIG THINKERS. PROBLEM SOLVERS. ACTION TAKERS.



BECOME AN ECO-LEADER

Join a community of over 1,000 volunteers to advance local Zero Waste solutions:

Zero Waste Legislation • Community Carbon Farming • Natural Climate Solutions Campaign • Outreach & Trainings

Learn more and sign up at: ecocycle.org/network

eco-cycle