

HOLIDAY

recycling guide 2022

eco-cycle®



How to Have a ZERO WASTE Holiday Season

1



Wrapping Paper

FOR A LIMITED TIME ONLY, until January 31, 2023, you can put your wrapping paper in your curbside recycling bin. Extra wrapping paper can be taken to the Waste Diversion Center in the single-stream bins. **PLEASE NO plastic, ribbons, bows, metallic paper, tissue paper, fluorescent or dark paper or tape (these items are trash).**

Since wrapping paper is generally not recyclable due to its high clay content, please consider reusable and recyclable options such as gift bags, maps, etc.

4



Use LED Holiday Lights

Traditional incandescent holiday lights are huge energy-suckers, so recycle your old lights and invest in LEDs. They may cost a little more up front, but holiday LED lights consume 80% less energy and last up to 25 times longer.

2



Recharge It!

Over 15 billion batteries are produced worldwide each year; many are alkaline batteries that are thrown out after one use. Replace your alkaline batteries with rechargeable ones, which can charge in 15 minutes. Save money and help the environment!

3



Reduce Food Waste

Roughly 40% of all food grown in the U.S. is thrown away. Prevent food waste by sticking to your shopping list, and encourage guests to take leftovers home in reusable containers, or freeze them for an easy meal another day. Unusable food scraps can be composted in curbside compost or a local drop-off center.

Drop-Off Center Information

The increase in online sales during the holiday season has resulted in more cardboard on our doorsteps, and ultimately in landfills. Resolve to recycle your cardboard instead! Rather than overwhelming your curbside carts, recycle your cardboard and other materials at one of the following drop-off locations:

Longmont Waste Diversion Center



For residents only. Bring your ID and a recent utility bill to show you are a City of Longmont resident. The center is available for all Longmont residents.

140 Martin St., Longmont

Front drop off is open 24/7 for cardboard and single-stream; staffed hours Mon-Sat, 8:00 am-4:00 pm

LongmontColorado.gov/wasteservices

Eco-Cycle CHaRM: Center for Hard-to-Recycle Materials



6400 Arapahoe Rd., Boulder (Co-located with Resource Central). Open Mon-Sat, 9:00 am-5:00 pm; closed Sundays

Fees apply for some materials; for a full list and prices, visit ecocycle.org/charm



LongmontColorado.gov/wasteservices

eco-cycle®



Don't forget to recycle all of these holiday leftovers!



Wrapping Paper

Please avoid using gift wrapping paper as it is a very low-grade material and considered a contaminant in the recycling bin because of its high clay and ink content and low fiber content. Instead, use wrapping paper alternatives that are recyclable, such as reusable paper gift bags, brown kraft paper, maps, blueprints, posters, newspaper, or reusable options such as fabric.

WRAPPING PAPER ACCEPTED THROUGH JANUARY 31, 2023 AT:

- **Longmont Waste Diversion Center** in Single Stream Recycling bin.
- **Boulder County Recycling Center** Drop-Off in in Single Stream Recycling bin
- **NO metallic wrapping paper, ribbons, bows, ornaments, tissue paper, dark or fluorescent paper, or tape.**

DO NOT PUT WRAPPING PAPER IN YOUR COMPOST BIN.



Food Scraps

COMPOST in curbside bins and at:

- **Longmont Waste Diversion Center**
- **Eco-Cycle CHaRM**; facility fee applies
- **Nederland Transfer Station & Recycling Drop-Off Center**

Cooking Oil

RECYCLE AT THESE LOCATIONS ONLY— NOT in curbside bins:

- **Longmont Waste Diversion Center**
- **Eco-Cycle CHaRM**; facility fee applies



Batteries

RECYCLE AT THESE LOCATIONS ONLY, NOT in curbside bins

Rechargeable Batteries:

- **Longmont Waste Diversion Center**
- **Boulder County Hazardous Materials Management Facility**

Alkaline Batteries:

- **Boulder County Hazardous Materials Management Facility**



Holiday Cards

REUSE cards as next year's gift tags or place-setting cards. RECYCLE in curbside bins and at drop-off centers. **NO cards embossed with foil or other non-paper material. NO non-paper items such as ribbons, photos, or photo paper.**

Dark Envelopes

COMPOSTABLE, NOT RECYCLABLE
Dark-colored envelopes such as reds and greens are not recyclable. White/light-colored paper envelopes are OK to recycle curbside.



Paper Shopping Bags & Cardboard Boxes

RECYCLE curbside or at drop-off centers. Large staples & shiny graphics OK. **REMOVE non-paper handles (synthetic string, etc.) and metal grommets.**

Packing Peanuts

REUSE ONLY, NOT RECYCLABLE
Take to packing & shipping stores; find locations at ecocycle.org/a-zguide

Bubble Wrap

RECYCLE AT **Longmont Waste Diversion Center** or at **Eco-Cycle CHaRM** and participating plastic film recycling collections, NOT in curbside bins.

Tissue Paper WITHOUT TAPE, GLITTER, ETC.

COMPOST in curbside bins and at these locations:

- **Longmont Waste Diversion Center**
- **Eco-Cycle CHaRM**; facility fee applies



Electronics & Appliances

RECYCLE AT THESE LOCATIONS:

- **Eco-Cycle CHaRM**; facility fee applies
- An e-Steward certified recycler such as those listed here: e-stewards.org/find-a-recycler

Disposing of electronics in the trash is illegal in Colorado.



Holiday String Lights & Extension Cords

RECYCLE AT THESE LOCATIONS ONLY, NOT in curbside bins

- **Longmont Waste Diversion Center**
- **Eco-Cycle CHaRM**; facility fee applies
- **Nederland Transfer Station and Recycling Center**
- **Allenspark Drop-Off Center**

Attached light bulbs are OK. **Please remove from packaging. Bundle cords & tie with the loose end so they don't get caught in machinery.**

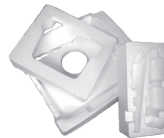


Plastic Bags

Includes grocery bags, dry-cleaner bags, and zip-top baggies (no zip pouches). RECYCLE AT THESE LOCATIONS ONLY, NOT in curbside bins:

- **Longmont Waste Diversion Center**
- **Eco-Cycle CHaRM**; facility fee applies
- Find other locations at ecocycle.org/a-zguide

Bags must be clean, dry, and empty. NO tape. Plastic bags are NOT recyclable in curbside bins. For details, visit ecocycle.org/charm-guidelines.



#6 White Block Foam

(aka Styrofoam®)

RECYCLE AT THESE LOCATIONS ONLY, NOT in curbside bins:

- **Longmont Waste Diversion Center**
- **Eco-Cycle CHaRM**; facility fee applies

This is the material typically used to package computers, TVs, etc.

NO food-grade foam (to-go containers, meat trays, egg cartons, disposable cups, etc.), moisture, tape, packing peanuts (see listing), bubble wrap (see listing), bendable foam, any foam other than #6, or any color other than white.



Tree Recycling in Longmont

Please be sure to remove all tinsel, lights, stands, etc. Do not leave other materials like garlands, wreaths, or trash. No bagged trees.

From Dec. 26, 2022 through Jan. 8, 2023 the City of Longmont will provide four satellite Christmas tree drop-off locations.

Roosevelt Park - In the parking lot South of 8th Avenue and Pratt Street, by Roosevelt Activity Pool.

Garden Acres Park - In the parking lot at 18th Avenue and Tulip Street.

Kanemoto Park - In the parking lot at South Pratt Parkway and South Coffman Street.

Centennial Park - In the parking lot at Alpine Street and Verdant Circle.

In addition, you can recycle your Christmas tree at the **Longmont Waste Diversion Center** during open hours year round! Most trees collected are taken to the Waste Diversion Center and ground into mulch available to residents. A small number of the trees will be placed in lakes within City parks and nature areas to create fish habitats.



eco-cycle